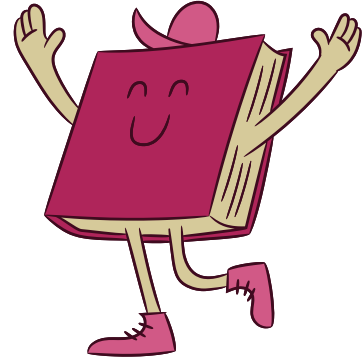




## Subtract decimals (missing minuend/subtrahend)



Find the missing numbers:

1)  $2.3 - \underline{\hspace{2cm}} = 0.4$

2)  $3 - \underline{\hspace{2cm}} = 1.8$

3)  $\underline{\hspace{2cm}} - 0.2 = 5.6$

4)  $4 - \underline{\hspace{2cm}} = 2.6$

5)  $\underline{\hspace{2cm}} - 1.8 = 0.2$

6)  $\underline{\hspace{2cm}} - 0.0 = 0$

7)  $4 - \underline{\hspace{2cm}} = 3.6$

8)  $\underline{\hspace{2cm}} - 1.9 = 8.1$

9)  $\underline{\hspace{2cm}} - 1.6 = 6.4$

10)  $7 - \underline{\hspace{2cm}} = 5.2$

11)  $9 - \underline{\hspace{2cm}} = 7.7$

12)  $\underline{\hspace{2cm}} - 0.5 = 7.5$

13)  $\underline{\hspace{2cm}} - 1.9 = 0.3$

14)  $9 - \underline{\hspace{2cm}} = 8.5$

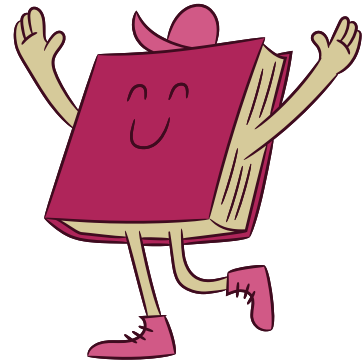
15)  $1.7 - \underline{\hspace{2cm}} = 1.5$

16)  $\underline{\hspace{2cm}} - 0.0 = 3$





## Subtract decimals (missing minuend/subtrahend)



Find the missing numbers:

1) \_\_\_\_\_ - 0.4 = 1.6

2) 3 - \_\_\_\_\_ = 2.1

3) \_\_\_\_\_ - 1.2 = 7.8

4) \_\_\_\_\_ - 0.7 = 7.3

5) 10 - \_\_\_\_\_ = 9.9

6) 0.1 - \_\_\_\_\_ = 0

7) 6 - \_\_\_\_\_ = 5.9

8) \_\_\_\_\_ - 0.2 = 1.3

9) \_\_\_\_\_ - 1.9 = 7.1

10) \_\_\_\_\_ - 0.2 = 7.8

11) 8.2 - \_\_\_\_\_ = 8

12) 8 - \_\_\_\_\_ = 6.2

13) \_\_\_\_\_ - 1.2 = 2.8

14) \_\_\_\_\_ - 1.6 = 8.4

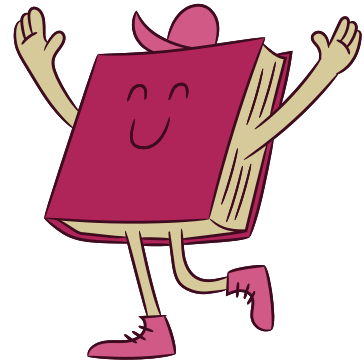
15) 1.5 - \_\_\_\_\_ = 1.5

16) 5 - \_\_\_\_\_ = 4.2





## Subtract decimals (missing minuend/subtrahend)



Find the missing numbers:

1)  $10 - \underline{\hspace{2cm}} = 9.1$

2)  $7.5 - \underline{\hspace{2cm}} = 6.8$

3)  $\underline{\hspace{2cm}} - 1.3 = 9.1$

4)  $5 - \underline{\hspace{2cm}} = 3.4$

5)  $10 - \underline{\hspace{2cm}} = 9.2$

6)  $9 - \underline{\hspace{2cm}} = 7.4$

7)  $\underline{\hspace{2cm}} - 1.3 = 7.3$

8)  $\underline{\hspace{2cm}} - 1.9 = 4.1$

9)  $\underline{\hspace{2cm}} - 1.9 = 3.1$

10)  $0.7 - \underline{\hspace{2cm}} = 0.1$

11)  $8 - \underline{\hspace{2cm}} = 6.2$

12)  $\underline{\hspace{2cm}} - 0.7 = 8.7$

13)  $\underline{\hspace{2cm}} - 0 = 1.7$

14)  $6.2 - \underline{\hspace{2cm}} = 5.9$

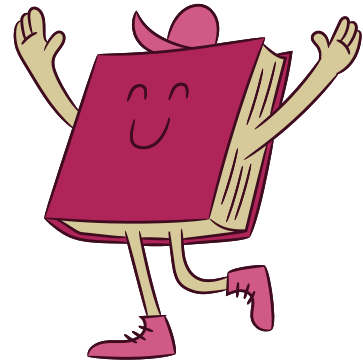
15)  $5.6 - \underline{\hspace{2cm}} = 4.8$

16)  $\underline{\hspace{2cm}} - 1 = 0.3$





## Subtract decimals (missing minuend/subtrahend)



Find the missing numbers:

1) \_\_\_\_\_ - 0.1 = 0.8

2) 8 - \_\_\_\_\_ = 7.6

3) \_\_\_\_\_ - 0.0 = 9.9

4) 8.3 - \_\_\_\_\_ = 8.2

5) 2 - \_\_\_\_\_ = 1

6) \_\_\_\_\_ - 0.1 = 1.7

7) \_\_\_\_\_ - 1.1 = 0.9

8) \_\_\_\_\_ - 0.1 = 4.9

9) \_\_\_\_\_ - 1.1 = 7.9

10) \_\_\_\_\_ - 0.0 = 6

11) \_\_\_\_\_ - 1.2 = 8.8

12) 6.0 - \_\_\_\_\_ = 4.9

13) 8.2 - \_\_\_\_\_ = 7.3

14) \_\_\_\_\_ - 1.9 = 0.1

15) \_\_\_\_\_ - 0.6 = 3.4

16) \_\_\_\_\_ - 0.4 = 3.5

