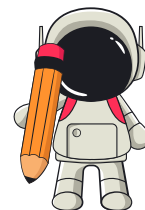


Grade 3 Subtraction Worksheet

SUBTRACT WHOLE TENS FROM A 2-DIGIT NUMBER (MISSING NUMBER)

Find the missing numbers:

1. _____ - 90 = 10
2. _____ - 10 = 22
3. 73 - _____ = 63
4. _____ - 60 = 40
5. _____ - 80 = 20
6. _____ - 20 = 18
7. 87 - _____ = 77
8. _____ - 50 = 30
9. _____ - 70 = 25
10. _____ - 30 = 15
11. 95 - _____ = 85
12. _____ - 40 = 35
13. _____ - 90 = 9
14. _____ - 10 = 14
15. 62 - _____ = 52
16. _____ - 60 = 38
17. _____ - 70 = 21
18. _____ - 20 = 10
19. 85 - _____ = 75
20. _____ - 50 = 20
21. _____ - 80 = 30
22. _____ - 30 = 5
23. 92 - _____ = 82
24. _____ - 40 = 20
25. _____ - 90 = 4
26. _____ - 10 = 8
27. 60 - _____ = 50
28. _____ - 60 = 25
29. _____ - 70 = 15
30. _____ - 20 = 7



Grade 3 Subtraction Worksheet

SUBTRACT WHOLE TENS FROM A 2-DIGIT NUMBER (MISSING NUMBER)

Find the missing numbers:

1. $89 - \underline{\quad\quad\quad} = 79$

16. $\underline{\quad\quad\quad} - 30 = 10$

2. $\underline{\quad\quad\quad} - 50 = 22$

17. $98 - \underline{\quad\quad\quad} = 88$

3. $\underline{\quad\quad\quad} - 80 = 19$

18. $\underline{\quad\quad\quad} - 40 = 28$

4. $\underline{\quad\quad\quad} - 30 = 6$

19. $\underline{\quad\quad\quad} - 90 = 1$

5. $97 - \underline{\quad\quad\quad} = 87$

20. $\underline{\quad\quad\quad} - 10 = 7$

6. $\underline{\quad\quad\quad} - 40 = 18$

21. $79 - \underline{\quad\quad\quad} = 69$

7. $\underline{\quad\quad\quad} - 90 = 3$

22. $\underline{\quad\quad\quad} - 60 = 35$

8. $\underline{\quad\quad\quad} - 10 = 11$

23. $\underline{\quad\quad\quad} - 70 = 22$

9. $74 - \underline{\quad\quad\quad} = 64$

24. $\underline{\quad\quad\quad} - 20 = 13$

10. $\underline{\quad\quad\quad} - 60 = 29$

25. $88 - \underline{\quad\quad\quad} = 78$

11. $\underline{\quad\quad\quad} - 70 = 11$

26. $\underline{\quad\quad\quad} - 50 = 17$

12. $\underline{\quad\quad\quad} - 20 = 15$

27. $\underline{\quad\quad\quad} - 80 = 32$

13. $83 - \underline{\quad\quad\quad} = 73$

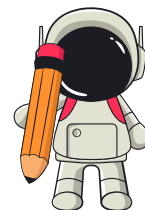
28. $\underline{\quad\quad\quad} - 30 = 8$

14. $\underline{\quad\quad\quad} - 50 = 21$

29. $96 - \underline{\quad\quad\quad} = 86$

15. $\underline{\quad\quad\quad} - 80 = 29$

30. $\underline{\quad\quad\quad} - 40 = 33$



Grade 3 Subtraction Worksheet

SUBTRACT WHOLE TENS FROM A 2-DIGIT NUMBER (MISSING NUMBER)

Find the missing numbers:

1. _____ - 90 = 5
2. _____ - 10 = 3
3. 72 - _____ = 62
4. _____ - 60 = 20
5. _____ - 80 = 50
6. _____ - 20 = 12
7. 81 - _____ = 71
8. _____ - 50 = 25
9. _____ - 70 = 40
10. _____ - 30 = 14
11. 96 - _____ = 86
12. _____ - 40 = 18
13. _____ - 90 = 20
14. _____ - 10 = 9
15. 65 - _____ = 55
16. _____ - 60 = 22
17. _____ - 70 = 30
18. _____ - 20 = 5
19. 89 - _____ = 79
20. _____ - 50 = 40
21. _____ - 80 = 60
22. _____ - 30 = 15
23. 94 - _____ = 84
24. _____ - 40 = 12
25. _____ - 90 = 17
26. _____ - 10 = 19
27. 66 - _____ = 56
28. _____ - 60 = 31
29. _____ - 70 = 50
30. _____ - 20 = 8