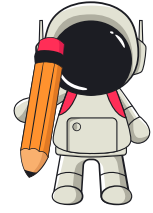


Grade 3 Subtraction Worksheet

SUBTRACTING WHOLE TENS FROM 1,000

Find the difference.

- | | |
|---------------------|---------------------|
| 1. $1,000 - 130 =$ | 16. $1,000 - 630 =$ |
| 2. $1,000 - 710 =$ | 17. $1,000 - 740 =$ |
| 3. $1,000 - 580 =$ | 18. $1,000 - 890 =$ |
| 4. $1,000 - 720 =$ | 19. $1,000 - 300 =$ |
| 5. $1,000 - 240 =$ | 20. $1,000 - 200 =$ |
| 6. $1,000 - 350 =$ | 21. $1,000 - 410 =$ |
| 7. $1,000 - 460 =$ | 22. $1,000 - 780 =$ |
| 8. $1,000 - 570 =$ | 23. $1,000 - 920 =$ |
| 9. $1,000 - 680 =$ | 24. $1,000 - 830 =$ |
| 10. $1,000 - 790 =$ | 25. $1,000 - 520 =$ |
| 11. $1,000 - 610 =$ | 26. $1,000 - 250 =$ |
| 12. $1,000 - 830 =$ | 27. $1,000 - 660 =$ |
| 13. $1,000 - 920 =$ | 28. $1,000 - 790 =$ |
| 14. $1,000 - 450 =$ | 29. $1,000 - 470 =$ |
| 15. $1,000 - 520 =$ | 30. $1,000 - 930 =$ |

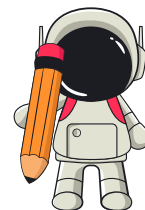


Grade 3 Subtraction Worksheet

SUBTRACTING WHOLE TENS FROM 1,000

Find the difference.

1. $1,000 - 240 =$
2. $1,000 - 590 =$
3. $1,000 - 650 =$
4. $1,000 - 750 =$
5. $1,000 - 850 =$
6. $1,000 - 910 =$
7. $1,000 - 490 =$
8. $1,000 - 730 =$
9. $1,000 - 830 =$
10. $1,000 - 680 =$
11. $1,000 - 320 =$
12. $1,000 - 210 =$
13. $1,000 - 530 =$
14. $1,000 - 610 =$
15. $1,000 - 850 =$
16. $1,000 - 730 =$
17. $1,000 - 610 =$
18. $1,000 - 830 =$
19. $1,000 - 310 =$
20. $1,000 - 470 =$
21. $1,000 - 140 =$
22. $1,000 - 950 =$
23. $1,000 - 710 =$
24. $1,000 - 430 =$
25. $1,000 - 390 =$
26. $1,000 - 570 =$
27. $1,000 - 890 =$
28. $1,000 - 420 =$
29. $1,000 - 690 =$
30. $1,000 - 210 =$

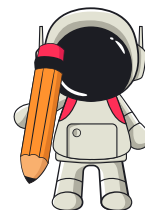


Grade 3 Subtraction Worksheet

SUBTRACTING WHOLE TENS FROM 1,000

Find the difference.

- | | |
|---------------------|---------------------|
| 1. $1,000 - 510 =$ | 16. $1,000 - 350 =$ |
| 2. $1,000 - 630 =$ | 17. $1,000 - 140 =$ |
| 3. $1,000 - 780 =$ | 18. $1,000 - 820 =$ |
| 4. $1,000 - 540 =$ | 19. $1,000 - 570 =$ |
| 5. $1,000 - 820 =$ | 20. $1,000 - 290 =$ |
| 6. $1,000 - 150 =$ | 21. $1,000 - 760 =$ |
| 7. $1,000 - 920 =$ | 22. $1,000 - 490 =$ |
| 8. $1,000 - 330 =$ | 23. $1,000 - 620 =$ |
| 9. $1,000 - 480 =$ | 24. $1,000 - 810 =$ |
| 10. $1,000 - 640 =$ | 25. $1,000 - 740 =$ |
| 11. $1,000 - 720 =$ | 26. $1,000 - 120 =$ |
| 12. $1,000 - 910 =$ | 27. $1,000 - 980 =$ |
| 13. $1,000 - 280 =$ | 28. $1,000 - 390 =$ |
| 14. $1,000 - 750 =$ | 29. $1,000 - 590 =$ |
| 15. $1,000 - 630 =$ | 30. $1,000 - 420 =$ |



Grade 3 Subtraction Worksheet

SUBTRACTING WHOLE TENS FROM 1,000

Find the difference.

- | | |
|---------------------|---------------------|
| 1. $1,000 - 680 =$ | 16. $1,000 - 290 =$ |
| 2. $1,000 - 870 =$ | 17. $1,000 - 380 =$ |
| 3. $1,000 - 130 =$ | 18. $1,000 - 470 =$ |
| 4. $1,000 - 460 =$ | 19. $1,000 - 540 =$ |
| 5. $1,000 - 710 =$ | 20. $1,000 - 610 =$ |
| 6. $1,000 - 150 =$ | 21. $1,000 - 730 =$ |
| 7. $1,000 - 390 =$ | 22. $1,000 - 850 =$ |
| 8. $1,000 - 850 =$ | 23. $1,000 - 910 =$ |
| 9. $1,000 - 470 =$ | 24. $1,000 - 270 =$ |
| 10. $1,000 - 610 =$ | 25. $1,000 - 620 =$ |
| 11. $1,000 - 120 =$ | 26. $1,000 - 490 =$ |
| 12. $1,000 - 140 =$ | 27. $1,000 - 350 =$ |
| 13. $1,000 - 650 =$ | 28. $1,000 - 720 =$ |
| 14. $1,000 - 270 =$ | 29. $1,000 - 810 =$ |
| 15. $1,000 - 930 =$ | 30. $1,000 - 130 =$ |