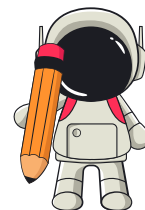


*Grade 3 Subtraction Worksheet*

# **SUBTRACTING WHOLE HUNDREDS FROM 4-DIGIT NUMBERS**

*Find the difference.*

- |                     |                     |
|---------------------|---------------------|
| 1. $9,324 - 800 =$  | 16. $5,849 - 200 =$ |
| 2. $7,454 - 100 =$  | 17. $9,602 - 700 =$ |
| 3. $1,201 - 800 =$  | 18. $2,754 - 100 =$ |
| 4. $3,734 - 500 =$  | 19. $6,928 - 800 =$ |
| 5. $8,243 - 600 =$  | 20. $8,392 - 500 =$ |
| 6. $4,926 - 400 =$  | 21. $4,516 - 300 =$ |
| 7. $6,184 - 300 =$  | 22. $9,211 - 600 =$ |
| 8. $2,981 - 200 =$  | 23. $7,843 - 200 =$ |
| 9. $7,625 - 500 =$  | 24. $6,491 - 700 =$ |
| 10. $5,721 - 300 =$ | 25. $5,120 - 800 =$ |
| 11. $9,302 - 700 =$ | 26. $8,742 - 400 =$ |
| 12. $6,532 - 200 =$ | 27. $3,524 - 100 =$ |
| 13. $8,611 - 600 =$ | 28. $9,836 - 900 =$ |
| 14. $3,917 - 500 =$ | 29. $4,292 - 300 =$ |
| 15. $7,324 - 400 =$ | 30. $7,910 - 600 =$ |

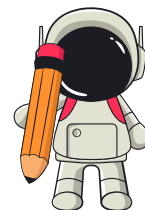


Grade 3 Subtraction Worksheet

# SUBTRACTING WHOLE HUNDREDS FROM 4-DIGIT NUMBERS

Find the difference.

1.  $5,239 - 400 =$
2.  $9,158 - 500 =$
3.  $2,874 - 100 =$
4.  $8,611 - 700 =$
5.  $6,324 - 200 =$
6.  $4,193 - 600 =$
7.  $9,502 - 400 =$
8.  $7,834 - 500 =$
9.  $3,681 - 100 =$
10.  $8,292 - 300 =$
11.  $5,492 - 700 =$
12.  $6,130 - 500 =$
13.  $9,914 - 800 =$
14.  $7,423 - 200 =$
15.  $8,684 - 600 =$
16.  $3,502 - 100 =$
17.  $9,829 - 400 =$
18.  $4,913 - 300 =$
19.  $7,342 - 600 =$
20.  $5,632 - 200 =$
21.  $9,278 - 700 =$
22.  $6,192 - 500 =$
23.  $8,471 - 100 =$
24.  $3,845 - 400 =$
25.  $9,392 - 300 =$
26.  $5,764 - 800 =$
27.  $7,153 - 200 =$
28.  $9,628 - 600 =$
29.  $6,302 - 500 =$
30.  $8,432 - 100 =$

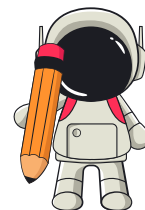


*Grade 3 Subtraction Worksheet*

# **SUBTRACTING WHOLE HUNDREDS FROM 4 DIGIT NUMBERS**

*Find the difference.*

- |                     |                     |
|---------------------|---------------------|
| 1. $9,271 - 700 =$  | 16. $4,583 - 100 =$ |
| 2. $4,192 - 300 =$  | 17. $8,672 - 500 =$ |
| 3. $7,634 - 400 =$  | 18. $6,354 - 300 =$ |
| 4. $5,932 - 200 =$  | 19. $9,823 - 400 =$ |
| 5. $8,142 - 600 =$  | 20. $7,941 - 600 =$ |
| 6. $9,461 - 500 =$  | 21. $4,612 - 100 =$ |
| 7. $3,210 - 100 =$  | 22. $9,103 - 500 =$ |
| 8. $6,830 - 400 =$  | 23. $8,251 - 300 =$ |
| 9. $5,721 - 300 =$  | 24. $6,413 - 700 =$ |
| 10. $9,104 - 200 =$ | 25. $9,732 - 600 =$ |
| 11. $8,521 - 600 =$ | 26. $7,914 - 500 =$ |
| 12. $7,981 - 400 =$ | 27. $8,592 - 100 =$ |
| 13. $6,402 - 700 =$ | 28. $9,461 - 300 =$ |
| 14. $5,190 - 800 =$ | 29. $7,823 - 400 =$ |
| 15. $9,742 - 200 =$ | 30. $5,493 - 600 =$ |



*Grade 3 Subtraction Worksheet*

# **SUBTRACTING WHOLE HUNDREDS FROM 4-DIGIT NUMBERS**

*Find the difference.*

1.  $6,912 - 800 =$
2.  $9,532 - 200 =$
3.  $8,123 - 100 =$
4.  $7,934 - 700 =$
5.  $9,723 - 300 =$
6.  $5,419 - 200 =$
7.  $8,251 - 400 =$
8.  $9,341 - 500 =$
9.  $6,142 - 800 =$
10.  $7,812 - 600 =$
11.  $5,731 - 300 =$
12.  $9,401 - 400 =$
13.  $8,542 - 200 =$
14.  $7,934 - 500 =$
15.  $9,812 - 600 =$
16.  $6,134 - 100 =$
17.  $8,471 - 200 =$
18.  $9,631 - 300 =$
19.  $5,942 - 400 =$
20.  $7,824 - 700 =$
21.  $9,753 - 600 =$
22.  $8,132 - 500 =$
23.  $6,914 - 300 =$
24.  $9,271 - 100 =$
25.  $8,643 - 400 =$
26.  $7,412 - 800 =$
27.  $9,834 - 200 =$
28.  $6,532 - 600 =$
29.  $8,241 - 500 =$
30.  $9,714 - 300 =$