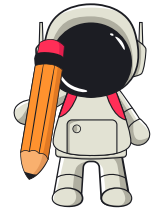


Grade 3 Subtraction Worksheet

SUBTRACT FROM THOUSANDS, MISSING NUMBER

Find the difference.

1. _____ - 994 = 6
2. 1,000 - _____ = 104
3. 3,000 - _____ = 2,812
4. 6,000 - 752 = _____
5. _____ - 482 = 18
6. 4,000 - _____ = 1,098
7. 5,000 - _____ = 3,942
8. _____ - 825 = 175
9. 3,500 - _____ = 1,230
10. 7,000 - _____ = 6,815
11. _____ - 499 = 101
12. 2,000 - _____ = 300
13. 8,000 - _____ = 4,750
14. _____ - 889 = 111
15. 9,000 - _____ = 8,147
16. _____ - 365 = 635
17. 10,000 - _____ = 8,536
18. 2,500 - _____ = 752
19. 6,500 - _____ = 5,763
20. _____ - 488 = 512
21. 4,200 - _____ = 2,198
22. 1,500 - _____ = 504
23. _____ - 649 = 351
24. 7,500 - _____ = 6,021
25. 5,600 - _____ = 4,990
26. _____ - 299 = 701
27. 3,200 - _____ = 2,008
28. 9,000 - _____ = 7,123
29. _____ - 877 = 123
30. 2,800 - _____ = 742

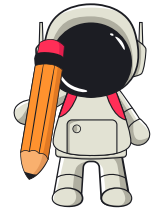


Grade 3 Subtraction Worksheet

SUBTRACT FROM THOUSANDS, MISSING NUMBER

Find the difference.

1. $6,000 - \underline{\quad\quad\quad} = 5,395$
2. $\underline{\quad\quad\quad} - 514 = 486$
3. $4,000 - \underline{\quad\quad\quad} = 2,609$
4. $\underline{\quad\quad\quad} - 933 = 67$
5. $7,300 - \underline{\quad\quad\quad} = 6,745$
6. $\underline{\quad\quad\quad} - 191 = 809$
7. $5,500 - \underline{\quad\quad\quad} = 4,608$
8. $8,500 - \underline{\quad\quad\quad} = 7,963$
9. $\underline{\quad\quad\quad} - 780 = 220$
10. $3,600 - \underline{\quad\quad\quad} = 2,148$
11. $10,000 - \underline{\quad\quad\quad} = 9,127$
12. $\underline{\quad\quad\quad} - 554 = 446$
13. $6,800 - \underline{\quad\quad\quad} = 6,279$
14. $9,500 - \underline{\quad\quad\quad} = 8,741$
15. $\underline{\quad\quad\quad} - 998 = 2$
16. $1,200 - \underline{\quad\quad\quad} = 705$
17. $2,900 - \underline{\quad\quad\quad} = 2,101$
18. $7,800 - \underline{\quad\quad\quad} = 6,903$
19. $\underline{\quad\quad\quad} - 729 = 271$
20. $5,700 - \underline{\quad\quad\quad} = 4,814$
21. $3,500 - \underline{\quad\quad\quad} = 2,715$
22. $6,900 - \underline{\quad\quad\quad} = 6,247$
23. $\underline{\quad\quad\quad} - 682 = 318$
24. $4,100 - \underline{\quad\quad\quad} = 3,409$
25. $9,300 - \underline{\quad\quad\quad} = 8,004$
26. $\underline{\quad\quad\quad} - 955 = 45$
27. $2,700 - \underline{\quad\quad\quad} = 1,923$
28. $10,000 - \underline{\quad\quad\quad} = 9,346$
29. $\underline{\quad\quad\quad} - 847 = 153$
30. $7,000 - \underline{\quad\quad\quad} = 6,129$

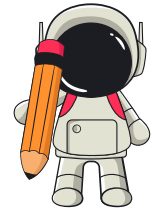


Grade 3 Subtraction Worksheet

SUBTRACT FROM THOUSANDS, MISSING NUMBER

Find the difference.

1. $8,000 - \underline{\quad\quad\quad} = 7,212$
2. $\underline{\quad\quad\quad} - 673 = 327$
3. $5,300 - \underline{\quad\quad\quad} = 4,712$
4. $\underline{\quad\quad\quad} - 406 = 594$
5. $6,600 - \underline{\quad\quad\quad} = 6,009$
6. $2,400 - \underline{\quad\quad\quad} = 1,768$
7. $\underline{\quad\quad\quad} - 762 = 238$
8. $9,700 - \underline{\quad\quad\quad} = 8,975$
9. $7,400 - \underline{\quad\quad\quad} = 6,512$
10. $\underline{\quad\quad\quad} - 634 = 366$
11. $3,800 - \underline{\quad\quad\quad} = 3,067$
12. $10,000 - \underline{\quad\quad\quad} = 9,501$
13. $\underline{\quad\quad\quad} - 823 = 177$
14. $5,200 - \underline{\quad\quad\quad} = 4,509$
15. $6,500 - \underline{\quad\quad\quad} = 5,923$
16. $\underline{\quad\quad\quad} - 491 = 509$
17. $8,300 - \underline{\quad\quad\quad} = 7,509$
18. $4,500 - \underline{\quad\quad\quad} = 4,019$
19. $\underline{\quad\quad\quad} - 777 = 223$
20. $9,600 - \underline{\quad\quad\quad} = 8,805$
21. $2,500 - \underline{\quad\quad\quad} = 1,948$
22. $\underline{\quad\quad\quad} - 369 = 631$
23. $6,000 - \underline{\quad\quad\quad} = 5,406$
24. $10,000 - \underline{\quad\quad\quad} = 9,299$
25. $\underline{\quad\quad\quad} - 547 = 453$
26. $4,700 - \underline{\quad\quad\quad} = 3,909$
27. $7,500 - \underline{\quad\quad\quad} = 6,807$
28. $\underline{\quad\quad\quad} - 877 = 123$
29. $3,200 - \underline{\quad\quad\quad} = 2,508$
30. $\underline{\quad\quad\quad} - 391 = 609$



Grade 3 Subtraction Worksheet

SUBTRACT FROM THOUSANDS, MISSING NUMBER

Find the difference.

1. $5,100 - \underline{\quad\quad\quad} = 4,698$
2. $8,200 - \underline{\quad\quad\quad} = 7,611$
3. $\underline{\quad\quad\quad} - 845 = 155$
4. $6,300 - \underline{\quad\quad\quad} = 5,831$
5. $7,900 - \underline{\quad\quad\quad} = 7,201$
6. $\underline{\quad\quad\quad} - 448 = 552$
7. $2,300 - \underline{\quad\quad\quad} = 1,627$
8. $\underline{\quad\quad\quad} - 739 = 261$
9. $9,000 - \underline{\quad\quad\quad} = 8,446$
10. $3,700 - \underline{\quad\quad\quad} = 3,212$
11. $\underline{\quad\quad\quad} - 984 = 16$
12. $4,600 - \underline{\quad\quad\quad} = 3,931$
13. $7,100 - \underline{\quad\quad\quad} = 6,423$
14. $\underline{\quad\quad\quad} - 511 = 489$
15. $5,300 - \underline{\quad\quad\quad} = 4,508$
16. $10,000 - \underline{\quad\quad\quad} = 9,621$
17. $\underline{\quad\quad\quad} - 778 = 222$
18. $8,900 - \underline{\quad\quad\quad} = 8,209$
19. $6,400 - \underline{\quad\quad\quad} = 5,904$
20. $\underline{\quad\quad\quad} - 668 = 332$
21. $4,300 - \underline{\quad\quad\quad} = 3,701$
22. $7,600 - \underline{\quad\quad\quad} = 6,829$
23. $\underline{\quad\quad\quad} - 874 = 126$
24. $9,500 - \underline{\quad\quad\quad} = 8,729$
25. $2,600 - \underline{\quad\quad\quad} = 1,992$
26. $\underline{\quad\quad\quad} - 598 = 402$
27. $5,700 - \underline{\quad\quad\quad} = 5,029$
28. $8,000 - \underline{\quad\quad\quad} = 7,405$
29. $\underline{\quad\quad\quad} - 713 = 287$
30. $6,100 - \underline{\quad\quad\quad} = 5,503$