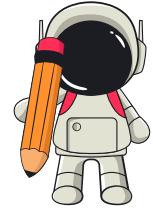


Grade 3 Subtraction Worksheet

SUBTRACTING WHOLE HUNDREDS

Find the difference.

1. $7,400 - 500 =$
2. $5,800 - 900 =$
3. $8,200 - 300 =$
4. $4,700 - 500 =$
5. $6,500 - 600 =$
6. $9,300 - 400 =$
7. $5,600 - 700 =$
8. $7,800 - 800 =$
9. $8,900 - 500 =$
10. $6,200 - 300 =$
11. $7,100 - 600 =$
12. $9,000 - 900 =$
13. $4,800 - 500 =$
14. $8,500 - 400 =$
15. $5,900 - 300 =$
16. $7,300 - 700 =$
17. $6,900 - 500 =$
18. $4,600 - 400 =$
19. $9,200 - 300 =$
20. $7,900 - 800 =$
21. $5,500 - 500 =$
22. $8,700 - 600 =$
23. $6,800 - 700 =$
24. $7,500 - 400 =$
25. $9,500 - 600 =$
26. $8,300 - 700 =$
27. $4,900 - 300 =$
28. $6,700 - 900 =$
29. $7,600 - 200 =$
30. $5,400 - 500 =$

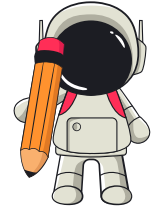


Grade 3 Subtraction Worksheet

SUBTRACTING WHOLE HUNDREDS

Find the difference.

1. $9,100 - 400 =$
2. $6,400 - 300 =$
3. $8,400 - 600 =$
4. $7,200 - 700 =$
5. $9,400 - 500 =$
6. $6,300 - 800 =$
7. $4,700 - 200 =$
8. $5,900 - 400 =$
9. $8,600 - 500 =$
10. $7,800 - 600 =$
11. $9,300 - 700 =$
12. $5,700 - 800 =$
13. $6,600 - 400 =$
14. $8,200 - 500 =$
15. $9,800 - 600 =$
16. $7,900 - 300 =$
17. $6,200 - 400 =$
18. $8,700 - 700 =$
19. $5,800 - 500 =$
20. $9,200 - 800 =$
21. $7,300 - 400 =$
22. $6,500 - 600 =$
23. $8,900 - 700 =$
24. $5,600 - 500 =$
25. $9,600 - 300 =$
26. $7,400 - 800 =$
27. $6,700 - 600 =$
28. $8,800 - 400 =$
29. $5,900 - 200 =$
30. $9,000 - 500 =$

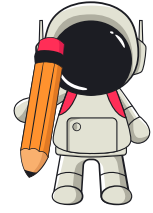


Grade 3 Subtraction Worksheet

SUBTRACTING WHOLE HUNDREDS

Find the difference.

1. $7,600 - 600 =$
2. $6,400 - 800 =$
3. $8,300 - 500 =$
4. $9,500 - 700 =$
5. $7,100 - 200 =$
6. $6,900 - 300 =$
7. $8,600 - 400 =$
8. $9,200 - 600 =$
9. $5,800 - 700 =$
10. $7,500 - 800 =$
11. $6,300 - 500 =$
12. $9,700 - 400 =$
13. $8,400 - 200 =$
14. $7,200 - 300 =$
15. $6,800 - 500 =$
16. $9,800 - 600 =$
17. $8,500 - 700 =$
18. $7,900 - 400 =$
19. $6,700 - 300 =$
20. $5,600 - 600 =$
21. $8,100 - 200 =$
22. $9,100 - 500 =$
23. $7,400 - 600 =$
24. $6,200 - 700 =$
25. $8,900 - 300 =$
26. $5,700 - 800 =$
27. $9,600 - 500 =$
28. $7,500 - 700 =$
29. $6,800 - 400 =$
30. $8,200 - 500 =$



Grade 3 Subtraction Worksheet

SUBTRACTING WHOLE HUNDREDS

Find the difference.

1. $9,300 - 600 =$
2. $7,600 - 800 =$
3. $6,400 - 300 =$
4. $8,700 - 200 =$
5. $9,500 - 700 =$
6. $7,300 - 400 =$
7. $6,900 - 600 =$
8. $5,500 - 800 =$
9. $9,100 - 200 =$
10. $8,300 - 400 =$
11. $7,900 - 300 =$
12. $6,700 - 500 =$
13. $8,600 - 600 =$
14. $5,800 - 700 =$
15. $9,800 - 400 =$
16. $7,100 - 500 =$
17. $8,200 - 300 =$
18. $6,500 - 200 =$
19. $9,700 - 800 =$
20. $7,600 - 400 =$
21. $8,500 - 300 =$
22. $6,300 - 700 =$
23. $9,400 - 500 =$
24. $8,900 - 600 =$
25. $7,800 - 700 =$
26. $6,100 - 200 =$
27. $9,200 - 400 =$
28. $8,700 - 500 =$
29. $7,500 - 600 =$
30. $9,300 - 300 =$