

Grade 3 Addition Worksheet

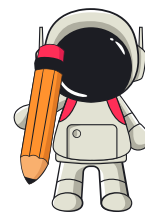


# ADDING WHOLE THOUSANDS TO A NUMBER

Find the sum.

1.  $6,000 + 392 = \underline{\hspace{2cm}}$
2.  $600 + 981 = \underline{\hspace{2cm}}$
3.  $8,000 + 5,296 = \underline{\hspace{2cm}}$
4.  $5,000 + 678 = \underline{\hspace{2cm}}$
5.  $4,000 + 217 = \underline{\hspace{2cm}}$
6.  $3,000 + 450 = \underline{\hspace{2cm}}$
7.  $7,000 + 832 = \underline{\hspace{2cm}}$
8.  $9,000 + 123 = \underline{\hspace{2cm}}$
9.  $2,000 + 689 = \underline{\hspace{2cm}}$
10.  $6,000 + 1,150 = \underline{\hspace{2cm}}$
11.  $8,000 + 1,234 = \underline{\hspace{2cm}}$
12.  $5,000 + 945 = \underline{\hspace{2cm}}$
13.  $7,000 + 564 = \underline{\hspace{2cm}}$
14.  $3,000 + 1,278 = \underline{\hspace{2cm}}$
15.  $9,000 + 245 = \underline{\hspace{2cm}}$
16.  $4,000 + 567 = \underline{\hspace{2cm}}$
17.  $2,000 + 345 = \underline{\hspace{2cm}}$
18.  $6,000 + 789 = \underline{\hspace{2cm}}$
19.  $5,000 + 1,234 = \underline{\hspace{2cm}}$
20.  $8,000 + 456 = \underline{\hspace{2cm}}$
21.  $3,000 + 678 = \underline{\hspace{2cm}}$
22.  $9,000 + 345 = \underline{\hspace{2cm}}$
23.  $4,000 + 890 = \underline{\hspace{2cm}}$
24.  $2,000 + 1,567 = \underline{\hspace{2cm}}$
25.  $7,000 + 293 = \underline{\hspace{2cm}}$
26.  $6,000 + 1,289 = \underline{\hspace{2cm}}$
27.  $5,000 + 1,345 = \underline{\hspace{2cm}}$
28.  $8,000 + 789 = \underline{\hspace{2cm}}$
29.  $3,000 + 2,345 = \underline{\hspace{2cm}}$
30.  $9,000 + 567 = \underline{\hspace{2cm}}$

Grade 3 Addition Worksheet



# ADDING WHOLE THOUSANDS TO A NUMBER

Find the sum.

1.  $4,000 + 678 = \underline{\hspace{2cm}}$
2.  $2,000 + 789 = \underline{\hspace{2cm}}$
3.  $7,000 + 412 = \underline{\hspace{2cm}}$
4.  $5,000 + 678 = \underline{\hspace{2cm}}$
5.  $8,000 + 1,234 = \underline{\hspace{2cm}}$
6.  $3,000 + 1,678 = \underline{\hspace{2cm}}$
7.  $9,000 + 432 = \underline{\hspace{2cm}}$
8.  $4,000 + 789 = \underline{\hspace{2cm}}$
9.  $2,000 + 345 = \underline{\hspace{2cm}}$
10.  $6,000 + 1,456 = \underline{\hspace{2cm}}$
11.  $7,000 + 1,234 = \underline{\hspace{2cm}}$
12.  $5,000 + 345 = \underline{\hspace{2cm}}$
13.  $8,000 + 678 = \underline{\hspace{2cm}}$
14.  $3,000 + 567 = \underline{\hspace{2cm}}$
15.  $9,000 + 678 = \underline{\hspace{2cm}}$
16.  $4,000 + 1,123 = \underline{\hspace{2cm}}$
17.  $2,000 + 789 = \underline{\hspace{2cm}}$
18.  $6,000 + 456 = \underline{\hspace{2cm}}$
19.  $5,000 + 789 = \underline{\hspace{2cm}}$
20.  $8,000 + 1,345 = \underline{\hspace{2cm}}$
21.  $3,000 + 890 = \underline{\hspace{2cm}}$
22.  $9,000 + 234 = \underline{\hspace{2cm}}$
23.  $4,000 + 1,456 = \underline{\hspace{2cm}}$
24.  $2,000 + 1,123 = \underline{\hspace{2cm}}$
25.  $7,000 + 789 = \underline{\hspace{2cm}}$
26.  $6,000 + 1,567 = \underline{\hspace{2cm}}$
27.  $5,000 + 678 = \underline{\hspace{2cm}}$
28.  $8,000 + 789 = \underline{\hspace{2cm}}$
29.  $3,000 + 2,456 = \underline{\hspace{2cm}}$
30.  $9,000 + 890 = \underline{\hspace{2cm}}$

Grade 3 Addition Worksheet

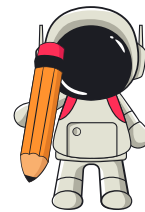


# ADDING WHOLE THOUSANDS TO A NUMBER

Find the sum.

1.  $4,000 + 567 =$  \_\_\_\_\_
2.  $2,000 + 678 =$  \_\_\_\_\_
3.  $7,000 + 1,345 =$  \_\_\_\_\_
4.  $6,000 + 789 =$  \_\_\_\_\_
5.  $5,000 + 1,234 =$  \_\_\_\_\_
6.  $8,000 + 345 =$  \_\_\_\_\_
7.  $3,000 + 1,890 =$  \_\_\_\_\_
8.  $9,000 + 1,123 =$  \_\_\_\_\_
9.  $4,000 + 678 =$  \_\_\_\_\_
10.  $2,000 + 567 =$  \_\_\_\_\_
11.  $7,000 + 1,234 =$  \_\_\_\_\_
12.  $6,000 + 890 =$  \_\_\_\_\_
13.  $5,000 + 789 =$  \_\_\_\_\_
14.  $8,000 + 1,567 =$  \_\_\_\_\_
15.  $3,000 + 678 =$  \_\_\_\_\_
16.  $9,000 + 789 =$  \_\_\_\_\_
17.  $4,000 + 890 =$  \_\_\_\_\_
18.  $2,000 + 345 =$  \_\_\_\_\_
19.  $7,000 + 567 =$  \_\_\_\_\_
20.  $6,000 + 1,345 =$  \_\_\_\_\_
21.  $5,000 + 678 =$  \_\_\_\_\_
22.  $8,000 + 789 =$  \_\_\_\_\_
23.  $3,000 + 2,345 =$  \_\_\_\_\_
24.  $9,000 + 678 =$  \_\_\_\_\_
25.  $4,000 + 1,567 =$  \_\_\_\_\_
26.  $2,000 + 789 =$  \_\_\_\_\_
27.  $7,000 + 890 =$  \_\_\_\_\_
28.  $6,000 + 1,234 =$  \_\_\_\_\_
29.  $5,000 + 789 =$  \_\_\_\_\_
30.  $8,000 + 456 =$  \_\_\_\_\_

Grade 3 Addition Worksheet



# ADDING WHOLE THOUSANDS TO A NUMBER

Find the sum.

1.  $3,000 + 1,678 = \underline{\hspace{2cm}}$
2.  $9,000 + 123 = \underline{\hspace{2cm}}$
3.  $4,000 + 678 = \underline{\hspace{2cm}}$
4.  $2,000 + 567 = \underline{\hspace{2cm}}$
5.  $7,000 + 1,234 = \underline{\hspace{2cm}}$
6.  $6,000 + 890 = \underline{\hspace{2cm}}$
7.  $5,000 + 1,567 = \underline{\hspace{2cm}}$
8.  $8,000 + 789 = \underline{\hspace{2cm}}$
9.  $3,000 + 345 = \underline{\hspace{2cm}}$
10.  $9,000 + 234 = \underline{\hspace{2cm}}$
11.  $4,000 + 567 = \underline{\hspace{2cm}}$
12.  $2,000 + 789 = \underline{\hspace{2cm}}$
13.  $7,000 + 678 = \underline{\hspace{2cm}}$
14.  $6,000 + 1,234 = \underline{\hspace{2cm}}$
15.  $5,000 + 890 = \underline{\hspace{2cm}}$
16.  $8,000 + 1,345 = \underline{\hspace{2cm}}$
17.  $3,000 + 1,890 = \underline{\hspace{2cm}}$
18.  $9,000 + 456 = \underline{\hspace{2cm}}$
19.  $4,000 + 1,567 = \underline{\hspace{2cm}}$
20.  $2,000 + 678 = \underline{\hspace{2cm}}$
21.  $7,000 + 789 = \underline{\hspace{2cm}}$
22.  $6,000 + 890 = \underline{\hspace{2cm}}$
23.  $5,000 + 345 = \underline{\hspace{2cm}}$
24.  $8,000 + 1,567 = \underline{\hspace{2cm}}$
25.  $3,000 + 678 = \underline{\hspace{2cm}}$
26.  $9,000 + 789 = \underline{\hspace{2cm}}$
27.  $4,000 + 678 = \underline{\hspace{2cm}}$
28.  $2,000 + 1,234 = \underline{\hspace{2cm}}$
29.  $7,000 + 890 = \underline{\hspace{2cm}}$
30.  $6,000 + 1,567 = \underline{\hspace{2cm}}$