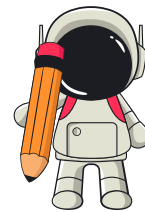


ADDING WHOLE THOUSANDS AND WHOLE HUNDREDS

Find the sum.

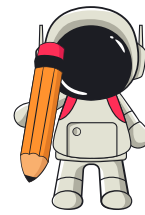
1. $7,000 + 300 =$ _____
2. $600 + 3,000 =$ _____
3. $4,000 + 1,000 =$ _____
4. $500 + 1,000 =$ _____
5. $3,000 + 200 =$ _____
6. $2,500 + 1,500 =$ _____
7. $8,000 + 500 =$ _____
8. $1,200 + 4,800 =$ _____
9. $6,500 + 400 =$ _____
10. $900 + 3,100 =$ _____
11. $5,000 + 2,000 =$ _____
12. $7,200 + 800 =$ _____
13. $3,300 + 600 =$ _____
14. $4,500 + 1,000 =$ _____
15. $1,000 + 5,000 =$ _____
16. $2,200 + 2,300 =$ _____
17. $6,000 + 500 =$ _____
18. $1,400 + 2,600 =$ _____
19. $8,000 + 300 =$ _____
20. $500 + 4,500 =$ _____
21. $3,700 + 200 =$ _____
22. $2,000 + 1,500 =$ _____
23. $5,500 + 1,200 =$ _____
24. $4,000 + 800 =$ _____
25. $7,300 + 400 =$ _____
26. $6,200 + 700 =$ _____
27. $1,800 + 2,200 =$ _____
28. $3,900 + 1,000 =$ _____
29. $8,500 + 300 =$ _____
30. $4,100 + 600 =$ _____



ADDING WHOLE THOUSANDS AND WHOLE HUNDREDS

Find the sum.

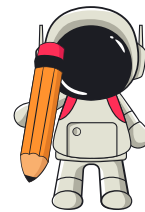
1. $5,600 + 2,000 =$ _____
2. $2,400 + 3,500 =$ _____
3. $7,800 + 100 =$ _____
4. $3,000 + 800 =$ _____
5. $1,500 + 4,000 =$ _____
6. $2,300 + 1,200 =$ _____
7. $6,400 + 400 =$ _____
8. $8,000 + 100 =$ _____
9. $5,100 + 500 =$ _____
10. $3,600 + 1,200 =$ _____
11. $4,200 + 800 =$ _____
12. $7,000 + 700 =$ _____
13. $6,000 + 600 =$ _____
14. $2,800 + 1,500 =$ _____
15. $1,200 + 3,300 =$ _____
16. $4,500 + 200 =$ _____
17. $5,400 + 600 =$ _____
18. $3,200 + 2,000 =$ _____
19. $7,600 + 200 =$ _____
20. $1,900 + 3,100 =$ _____
21. $2,000 + 4,000 =$ _____
22. $6,300 + 400 =$ _____
23. $8,200 + 300 =$ _____
24. $5,700 + 1,000 =$ _____
25. $3,400 + 1,600 =$ _____
26. $2,500 + 2,000 =$ _____
27. $7,400 + 300 =$ _____
28. $6,800 + 100 =$ _____
29. $1,000 + 3,500 =$ _____
30. $4,800 + 500 =$ _____



ADDING WHOLE THOUSANDS AND WHOLE HUNDREDS

Find the sum.

- $4,500 + 300 = \underline{\hspace{2cm}}$
- $6,400 + 200 = \underline{\hspace{2cm}}$
- $2,300 + 3,200 = \underline{\hspace{2cm}}$
- $1,500 + 3,600 = \underline{\hspace{2cm}}$
- $7,800 + 100 = \underline{\hspace{2cm}}$
- $5,400 + 500 = \underline{\hspace{2cm}}$
- $3,000 + 2,500 = \underline{\hspace{2cm}}$
- $8,500 + 200 = \underline{\hspace{2cm}}$
- $6,300 + 400 = \underline{\hspace{2cm}}$
- $1,800 + 2,800 = \underline{\hspace{2cm}}$
- $4,200 + 700 = \underline{\hspace{2cm}}$
- $5,600 + 300 = \underline{\hspace{2cm}}$
- $7,100 + 100 = \underline{\hspace{2cm}}$
- $3,400 + 1,200 = \underline{\hspace{2cm}}$
- $2,800 + 2,000 = \underline{\hspace{2cm}}$
- $6,000 + 500 = \underline{\hspace{2cm}}$
- $4,700 + 200 = \underline{\hspace{2cm}}$
- $5,300 + 100 = \underline{\hspace{2cm}}$
- $7,500 + 400 = \underline{\hspace{2cm}}$
- $2,000 + 2,600 = \underline{\hspace{2cm}}$
- $3,800 + 1,000 = \underline{\hspace{2cm}}$
- $6,200 + 500 = \underline{\hspace{2cm}}$
- $4,800 + 100 = \underline{\hspace{2cm}}$
- $8,300 + 300 = \underline{\hspace{2cm}}$
- $1,600 + 3,400 = \underline{\hspace{2cm}}$
- $5,200 + 700 = \underline{\hspace{2cm}}$
- $2,400 + 3,100 = \underline{\hspace{2cm}}$
- $6,500 + 200 = \underline{\hspace{2cm}}$
- $3,900 + 300 = \underline{\hspace{2cm}}$
- $7,000 + 200 = \underline{\hspace{2cm}}$



ADDING WHOLE THOUSANDS AND WHOLE HUNDREDS

Find the sum.

1. $5,300 + 700 = \underline{\hspace{2cm}}$
2. $2,200 + 3,000 = \underline{\hspace{2cm}}$
3. $3,800 + 1,100 = \underline{\hspace{2cm}}$
4. $6,500 + 600 = \underline{\hspace{2cm}}$
5. $1,400 + 4,000 = \underline{\hspace{2cm}}$
6. $2,800 + 2,200 = \underline{\hspace{2cm}}$
7. $5,900 + 100 = \underline{\hspace{2cm}}$
8. $8,400 + 500 = \underline{\hspace{2cm}}$
9. $3,600 + 2,000 = \underline{\hspace{2cm}}$
10. $6,200 + 800 = \underline{\hspace{2cm}}$
11. $4,400 + 500 = \underline{\hspace{2cm}}$
12. $7,000 + 600 = \underline{\hspace{2cm}}$
13. $1,800 + 3,000 = \underline{\hspace{2cm}}$
14. $2,500 + 1,500 = \underline{\hspace{2cm}}$
15. $8,600 + 200 = \underline{\hspace{2cm}}$
16. $5,800 + 400 = \underline{\hspace{2cm}}$
17. $3,200 + 1,800 = \underline{\hspace{2cm}}$
18. $7,500 + 300 = \underline{\hspace{2cm}}$
19. $6,700 + 200 = \underline{\hspace{2cm}}$
20. $1,600 + 4,000 = \underline{\hspace{2cm}}$
21. $2,000 + 2,800 = \underline{\hspace{2cm}}$
22. $5,500 + 300 = \underline{\hspace{2cm}}$
23. $3,900 + 700 = \underline{\hspace{2cm}}$
24. $4,600 + 1,000 = \underline{\hspace{2cm}}$
25. $7,200 + 500 = \underline{\hspace{2cm}}$
26. $6,000 + 300 = \underline{\hspace{2cm}}$
27. $2,100 + 2,400 = \underline{\hspace{2cm}}$
28. $5,200 + 600 = \underline{\hspace{2cm}}$
29. $3,700 + 1,500 = \underline{\hspace{2cm}}$
30. $8,100 + 400 = \underline{\hspace{2cm}}$