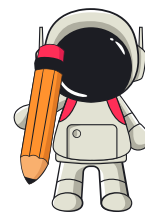




ADDING WHOLE TENS TO 2-DIGIT NUMBERS – MISSING ADDEND

Find the missing numbers:

1. $32 + \underline{\quad\quad} = 132$
2. $\underline{\quad\quad} + 50 = 77$
3. $\underline{\quad\quad} + 70 = 95$
4. $99 + \underline{\quad\quad} = 109$
5. $45 + \underline{\quad\quad} = 120$
6. $\underline{\quad\quad} + 65 = 130$
7. $88 + \underline{\quad\quad} = 150$
8. $\underline{\quad\quad} + 85 = 100$
9. $23 + \underline{\quad\quad} = 123$
10. $75 + \underline{\quad\quad} = 200$
11. $\underline{\quad\quad} + 34 = 100$
12. $67 + \underline{\quad\quad} = 150$
13. $48 + \underline{\quad\quad} = 100$
14. $\underline{\quad\quad} + 52 = 110$
15. $36 + \underline{\quad\quad} = 96$
16. $\underline{\quad\quad} + 78 = 135$
17. $19 + \underline{\quad\quad} = 119$
18. $57 + \underline{\quad\quad} = 112$
19. $\underline{\quad\quad} + 42 = 92$
20. $14 + \underline{\quad\quad} = 74$
21. $28 + \underline{\quad\quad} = 128$
22. $90 + \underline{\quad\quad} = 190$
23. $\underline{\quad\quad} + 45 = 90$
24. $33 + \underline{\quad\quad} = 100$
25. $64 + \underline{\quad\quad} = 124$
26. $\underline{\quad\quad} + 60 = 140$
27. $76 + \underline{\quad\quad} = 176$
28. $55 + \underline{\quad\quad} = 105$
29. $21 + \underline{\quad\quad} = 121$
30. $\underline{\quad\quad} + 90 = 150$



ADDING WHOLE TENS TO 2-DIGIT NUMBERS – MISSING ADDEND

Find the missing numbers:

1. $13 + \underline{\quad\quad} = 113$
2. $\underline{\quad\quad} + 73 = 100$
3. $49 + \underline{\quad\quad} = 149$
4. $68 + \underline{\quad\quad} = 150$
5. $\underline{\quad\quad} + 35 = 100$
6. $22 + \underline{\quad\quad} = 82$
7. $81 + \underline{\quad\quad} = 180$
8. $\underline{\quad\quad} + 47 = 100$
9. $29 + \underline{\quad\quad} = 129$
10. $60 + \underline{\quad\quad} = 110$
11. $\underline{\quad\quad} + 25 = 90$
12. $72 + \underline{\quad\quad} = 172$
13. $31 + \underline{\quad\quad} = 131$
14. $\underline{\quad\quad} + 33 = 88$
15. $83 + \underline{\quad\quad} = 183$
16. $18 + \underline{\quad\quad} = 100$
17. $\underline{\quad\quad} + 48 = 108$
18. $51 + \underline{\quad\quad} = 101$
19. $20 + \underline{\quad\quad} = 80$
20. $\underline{\quad\quad} + 29 = 99$
21. $43 + \underline{\quad\quad} = 143$
22. $27 + \underline{\quad\quad} = 87$
23. $\underline{\quad\quad} + 44 = 90$
24. $12 + \underline{\quad\quad} = 100$
25. $58 + \underline{\quad\quad} = 108$
26. $\underline{\quad\quad} + 37 = 87$
27. $26 + \underline{\quad\quad} = 126$
28. $69 + \underline{\quad\quad} = 150$
29. $\underline{\quad\quad} + 24 = 74$
30. $16 + \underline{\quad\quad} = 76$