

Grade 3 Addition Worksheet

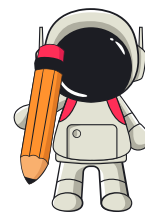


ADDING WHOLE HUNDREDS – MISSING ADDENDS

Find the missing numbers:

- | | |
|-------------------------|-------------------------|
| 1. _____ + 900 = 1900 | 16. _____ + 300 = 1200 |
| 2. 1000 + _____ = 1200 | 17. 600 + _____ = 1300 |
| 3. 600 + _____ = 600 | 18. _____ + 700 = 2000 |
| 4. _____ + 900 = 1100 | 19. 500 + _____ = 900 |
| 5. _____ + 700 = 1700 | 20. _____ + 1000 = 1900 |
| 6. 800 + _____ = 1000 | 21. 300 + _____ = 1300 |
| 7. 400 + _____ = 1400 | 22. _____ + 600 = 1500 |
| 8. _____ + 500 = 1500 | 23. 900 + _____ = 1400 |
| 9. _____ + 600 = 1200 | 24. _____ + 500 = 800 |
| 10. 900 + _____ = 1800 | 25. 1000 + _____ = 1300 |
| 11. 300 + _____ = 1000 | 26. 200 + _____ = 900 |
| 12. _____ + 800 = 1800 | 27. _____ + 400 = 700 |
| 13. 700 + _____ = 1300 | 28. 800 + _____ = 1600 |
| 14. _____ + 400 = 900 | 29. _____ + 200 = 1700 |
| 15. 1000 + _____ = 1500 | 30. 500 + _____ = 700 |

Grade 3 Addition Worksheet



ADDING WHOLE HUNDREDS – MISSING ADDENDS

Find the missing numbers:

1. _____ + 1000 = 1100
2. 300 + _____ = 700
3. _____ + 900 = 1500
4. 400 + _____ = 800
5. _____ + 600 = 1100
6. 700 + _____ = 1400
7. _____ + 500 = 1300
8. 600 + _____ = 800
9. _____ + 800 = 1300
10. 900 + _____ = 1600
11. _____ + 700 = 900
12. 500 + _____ = 1400
13. _____ + 1000 = 1200
14. 200 + _____ = 600
15. _____ + 900 = 1200
16. 800 + _____ = 1500
17. _____ + 400 = 1000
18. 1000 + _____ = 1600
19. _____ + 300 = 600
20. 600 + _____ = 1000
21. _____ + 500 = 1200
22. 700 + _____ = 1800
23. _____ + 600 = 1400
24. 400 + _____ = 1200
25. _____ + 800 = 1100
26. 900 + _____ = 2000
27. _____ + 700 = 1100
28. 500 + _____ = 1100
29. _____ + 1000 = 1400
30. 300 + _____ = 500

Grade 3 Addition Worksheet



ADDING WHOLE HUNDREDS – MISSING ADDENDS

Find the missing numbers:

- | | |
|--|--|
| 1. $500 + \underline{\quad\quad} = 1800$ | 16. $\underline{\quad\quad} + 800 = 1800$ |
| 2. $\underline{\quad\quad} + 900 = 1700$ | 17. $300 + \underline{\quad\quad} = 700$ |
| 3. $600 + \underline{\quad\quad} = 1200$ | 18. $\underline{\quad\quad} + 700 = 1700$ |
| 4. $\underline{\quad\quad} + 700 = 1200$ | 19. $600 + \underline{\quad\quad} = 1400$ |
| 5. $1000 + \underline{\quad\quad} = 1300$ | 20. $\underline{\quad\quad} + 1000 = 1500$ |
| 6. $\underline{\quad\quad} + 500 = 1400$ | 21. $200 + \underline{\quad\quad} = 800$ |
| 7. $800 + \underline{\quad\quad} = 1900$ | 22. $\underline{\quad\quad} + 900 = 1300$ |
| 8. $\underline{\quad\quad} + 600 = 1500$ | 23. $400 + \underline{\quad\quad} = 1600$ |
| 9. $300 + \underline{\quad\quad} = 800$ | 24. $\underline{\quad\quad} + 300 = 1000$ |
| 10. $\underline{\quad\quad} + 400 = 1100$ | 25. $800 + \underline{\quad\quad} = 1500$ |
| 11. $700 + \underline{\quad\quad} = 1500$ | 26. $\underline{\quad\quad} + 500 = 900$ |
| 12. $\underline{\quad\quad} + 1000 = 1400$ | 27. $1000 + \underline{\quad\quad} = 1900$ |
| 13. $400 + \underline{\quad\quad} = 1300$ | 28. $\underline{\quad\quad} + 600 = 1100$ |
| 14. $\underline{\quad\quad} + 900 = 1600$ | 29. $700 + \underline{\quad\quad} = 1600$ |
| 15. $500 + \underline{\quad\quad} = 1500$ | 30. $\underline{\quad\quad} + 400 = 1400$ |

Grade 3 Addition Worksheet



ADDING WHOLE HUNDREDS – MISSING ADDENDS

Find the missing numbers:

- | | |
|---|--|
| 1. $500 + \underline{\quad\quad} = 1200$ | 16. $\underline{\quad\quad} + 900 = 1800$ |
| 2. $\underline{\quad\quad} + 900 = 1000$ | 17. $400 + \underline{\quad\quad} = 1300$ |
| 3. $1000 + \underline{\quad\quad} = 1100$ | 18. $\underline{\quad\quad} + 600 = 1600$ |
| 4. $\underline{\quad\quad} + 600 = 1200$ | 19. $800 + \underline{\quad\quad} = 1400$ |
| 5. $700 + \underline{\quad\quad} = 1600$ | 20. $\underline{\quad\quad} + 300 = 1500$ |
| 6. $\underline{\quad\quad} + 500 = 800$ | 21. $600 + \underline{\quad\quad} = 1100$ |
| 7. $800 + \underline{\quad\quad} = 1700$ | 22. $\underline{\quad\quad} + 700 = 1300$ |
| 8. $\underline{\quad\quad} + 400 = 1200$ | 23. $900 + \underline{\quad\quad} = 1300$ |
| 9. $200 + \underline{\quad\quad} = 700$ | 24. $\underline{\quad\quad} + 500 = 1000$ |
| 10. $\underline{\quad\quad} + 300 = 1300$ | 25. $1000 + \underline{\quad\quad} = 2000$ |
| 11. $900 + \underline{\quad\quad} = 1700$ | 26. $\underline{\quad\quad} + 200 = 900$ |
| 12. $\underline{\quad\quad} + 700 = 1400$ | 27. $300 + \underline{\quad\quad} = 600$ |
| 13. $600 + \underline{\quad\quad} = 1300$ | 28. $\underline{\quad\quad} + 1000 = 1700$ |
| 14. $\underline{\quad\quad} + 800 = 1500$ | 29. $400 + \underline{\quad\quad} = 1500$ |
| 15. $500 + \underline{\quad\quad} = 2000$ | 30. $\underline{\quad\quad} + 800 = 1400$ |