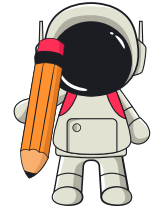


Grade 3 Addition Worksheet

ADDING TWO WHOLE TENS AND TWO 1-DIGIT NUMBERS

Find the sum

1. $12 + 24 + 36 + 48 =$ _____
2. $90 + 10 + 20 + 30 =$ _____
3. $18 + 27 + 36 + 45 =$ _____
4. $22 + 33 + 44 + 55 =$ _____
5. $15 + 25 + 35 + 45 =$ _____
6. $50 + 50 + 50 + 50 =$ _____
7. $8 + 16 + 24 + 32 =$ _____
8. $40 + 30 + 20 + 15 =$ _____
9. $7 + 14 + 21 + 28 =$ _____
10. $80 + 10 + 20 + 30 =$ _____
11. $25 + 35 + 45 + 55 =$ _____
12. $6 + 12 + 18 + 24 =$ _____
13. $30 + 60 + 90 + 120 =$ _____
14. $11 + 22 + 33 + 44 =$ _____
15. $7 + 14 + 21 + 28 =$ _____
16. $50 + 30 + 20 + 10 =$ _____
17. $16 + 32 + 48 + 64 =$ _____
18. $100 + 25 + 15 + 10 =$ _____
19. $17 + 34 + 51 + 68 =$ _____
20. $40 + 50 + 60 + 70 =$ _____



Grade 3 Addition Worksheet

ADDING TWO WHOLE TENS AND TWO 1-DIGIT NUMBERS

Find the sum

1. $70 + 7 + 8 + 10 = \underline{\hspace{2cm}}$
2. $7 + 7 + 90 + 20 = \underline{\hspace{2cm}}$
3. $40 + 60 + 3 + 6 = \underline{\hspace{2cm}}$
4. $3 + 7 + 40 + 10 = \underline{\hspace{2cm}}$
5. $20 + 50 + 6 + 9 = \underline{\hspace{2cm}}$
6. $30 + 20 + 7 + 10 = \underline{\hspace{2cm}}$
7. $10 + 8 + 70 + 5 = \underline{\hspace{2cm}}$
8. $15 + 25 + 40 + 5 = \underline{\hspace{2cm}}$
9. $80 + 5 + 7 + 6 = \underline{\hspace{2cm}}$
10. $60 + 10 + 9 + 3 = \underline{\hspace{2cm}}$
11. $50 + 30 + 5 + 10 = \underline{\hspace{2cm}}$
12. $70 + 20 + 4 + 8 = \underline{\hspace{2cm}}$
13. $40 + 40 + 3 + 5 = \underline{\hspace{2cm}}$
14. $20 + 80 + 7 + 10 = \underline{\hspace{2cm}}$
15. $60 + 30 + 2 + 4 = \underline{\hspace{2cm}}$
16. $10 + 70 + 5 + 15 = \underline{\hspace{2cm}}$
17. $90 + 10 + 6 + 4 = \underline{\hspace{2cm}}$
18. $80 + 15 + 2 + 3 = \underline{\hspace{2cm}}$
19. $30 + 50 + 8 + 12 = \underline{\hspace{2cm}}$
20. $20 + 10 + 70 + 9 = \underline{\hspace{2cm}}$