

ADD/SUBTRACT/MULTIPLY W/ PARENTHESIS - 6 NUMBERS

Solve the following.

1. $4 + (7 \times 3 \times 8) - (15 - 7) = \underline{\hspace{2cm}}$

2. $(18 + 6) - (20 - 8 - 4) \times 2 = \underline{\hspace{2cm}}$

3. $6 \times 8 - (9 + 22 - 14) \times 3 = \underline{\hspace{2cm}}$

4. $10 + 25 - 3 \times 7 - (21 - 17) = \underline{\hspace{2cm}}$

5. $2 + (5 \times 4 \times 6) - (10 - 5) = \underline{\hspace{2cm}}$

6. $(12 + 8) - (20 - 9 - 6) \times 3 = \underline{\hspace{2cm}}$

7. $7 \times 6 - (8 + 18 - 12) \times 2 = \underline{\hspace{2cm}}$

8. $15 + 20 - 4 \times 5 - (25 - 22) = \underline{\hspace{2cm}}$

9. $3 + (9 \times 2 \times 7) - (10 - 6) = \underline{\hspace{2cm}}$

10. $(16 + 7) - (18 - 8 - 5) \times 4 = \underline{\hspace{2cm}}$

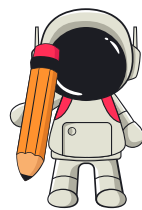
11. $8 \times 5 - (11 + 24 - 15) \times 3 = \underline{\hspace{2cm}}$

12. $9 + 30 - 2 \times 8 - (22 - 18) = \underline{\hspace{2cm}}$

13. $4 + (6 \times 3 \times 9) - (14 - 8) = \underline{\hspace{2cm}}$

14. $(20 + 9) - (25 - 12 - 5) \times 2 = \underline{\hspace{2cm}}$

15. $7 \times 8 - (12 + 16 - 9) \times 4 = \underline{\hspace{2cm}}$



ADD/SUBTRACT/MULTIPLY W/ PARENTHESIS - 6 NUMBERS

Solve the following.

1. $12 + 22 - 3 \times 5 - (20 - 17) = \underline{\hspace{2cm}}$

2. $2 + (10 \times 4 \times 5) - (15 - 7) = \underline{\hspace{2cm}}$

3. $(14 + 11) - (22 - 12 - 4) \times 3 = \underline{\hspace{2cm}}$

4. $6 \times 7 - (15 + 25 - 18) \times 2 = \underline{\hspace{2cm}}$

5. $8 + 35 - 4 \times 6 - (20 - 16) = \underline{\hspace{2cm}}$

6. $5 + (8 \times 2 \times 9) - (13 - 8) = \underline{\hspace{2cm}}$

7. $(12 + 10) - (18 - 9 - 4) \times 2 = \underline{\hspace{2cm}}$

8. $9 \times 5 - (10 + 20 - 15) \times 3 = \underline{\hspace{2cm}}$

9. $11 + 40 - 2 \times 7 - (24 - 20) = \underline{\hspace{2cm}}$

10. $3 + (7 \times 4 \times 6) - (18 - 10) = \underline{\hspace{2cm}}$

11. $(16 + 5) - (22 - 10 - 3) \times 3 = \underline{\hspace{2cm}}$

12. $8 \times 9 - (14 + 20 - 11) \times 2 = \underline{\hspace{2cm}}$

13. $13 + 25 - 5 \times 8 - (22 - 19) = \underline{\hspace{2cm}}$

14. $4 + (9 \times 3 \times 7) - (12 - 6) = \underline{\hspace{2cm}}$

15. $(18 + 6) - (25 - 10 - 7) \times 4 = \underline{\hspace{2cm}}$



ADD/SUBTRACT/MULTIPLY W/ PARENTHESIS - 6 NUMBERS

Solve the following.

1. $7 \times 5 - (15 + 22 - 13) \times 3 = \underline{\hspace{2cm}}$

2. $10 + 30 - 2 \times 9 - (24 - 18) = \underline{\hspace{2cm}}$

3. $5 + (6 \times 4 \times 8) - (16 - 8) = \underline{\hspace{2cm}}$

4. $(14 + 7) - (22 - 10 - 5) \times 2 = \underline{\hspace{2cm}}$

5. $9 \times 6 - (20 + 15 - 12) \times 4 = \underline{\hspace{2cm}}$

6. $12 + 28 - 3 \times 7 - (20 - 16) = \underline{\hspace{2cm}}$

7. $3 + (8 \times 5 \times 4) - (14 - 7) = \underline{\hspace{2cm}}$

8. $(20 + 8) - (25 - 12 - 5) \times 3 = \underline{\hspace{2cm}}$

9. $6 \times 7 - (16 + 18 - 12) \times 2 = \underline{\hspace{2cm}}$

10. $11 + 35 - 4 \times 5 - (22 - 20) = \underline{\hspace{2cm}}$

11. $2 + (10 \times 3 \times 7) - (15 - 9) = \underline{\hspace{2cm}}$

12. $(12 + 8) - (18 - 9 - 5) \times 4 = \underline{\hspace{2cm}}$

13. $8 \times 4 - (11 + 22 - 14) \times 2 = \underline{\hspace{2cm}}$

14. $9 + 40 - 3 \times 6 - (20 - 18) = \underline{\hspace{2cm}}$

15. $4 + (7 \times 5 \times 6) - (18 - 10) = \underline{\hspace{2cm}}$