

ADD/SUBTRACT/MULTIPLY W/ PARENTHESIS - 5 NUMBERS

Solve the following.

1. $8 \times 6 - (15 + 10 - 5) = \underline{\hspace{2cm}}$

2. $9 \times (7 + 25 - 18 - 12) = \underline{\hspace{2cm}}$

3. $3 + 14 + (20 - 9) \times 4 = \underline{\hspace{2cm}}$

4. $25 - 8 + 3 \times 5 \times 2 = \underline{\hspace{2cm}}$

5. $6 \times 4 - (12 + 8 - 5) = \underline{\hspace{2cm}}$

6. $5 \times (9 + 18 - 12 - 6) = \underline{\hspace{2cm}}$

7. $7 + 20 + (15 - 5) \times 3 = \underline{\hspace{2cm}}$

8. $30 - 7 + 2 \times 6 \times 4 = \underline{\hspace{2cm}}$

9. $4 \times 8 - (10 + 12 - 6) = \underline{\hspace{2cm}}$

10. $5 \times (11 + 20 - 15 - 8) = \underline{\hspace{2cm}}$

11. $9 + 16 + (22 - 10) \times 3 = \underline{\hspace{2cm}}$

12. $40 - 12 + 4 \times 5 \times 3 = \underline{\hspace{2cm}}$

13. $6 \times 7 - (18 + 12 - 8) = \underline{\hspace{2cm}}$

14. $8 \times (10 + 15 - 10 - 5) = \underline{\hspace{2cm}}$

15. $11 + 17 + (18 - 9) \times 2 = \underline{\hspace{2cm}}$



ADD/SUBTRACT/MULTIPLY W/ PARENTHESIS - 5 NUMBERS

Solve the following.

1. $35 - 10 + 6 \times 4 \times 2 = \underline{\hspace{2cm}}$

2. $3 \times 9 - (14 + 9 - 8) = \underline{\hspace{2cm}}$

3. $7 \times (5 + 20 - 15 - 10) = \underline{\hspace{2cm}}$

4. $12 + 21 + (25 - 10) \times 2 = \underline{\hspace{2cm}}$

5. $50 - 15 + 3 \times 7 \times 2 = \underline{\hspace{2cm}}$

6. $4 \times 5 - (20 + 15 - 10) = \underline{\hspace{2cm}}$

7. $6 \times (8 + 24 - 18 - 10) = \underline{\hspace{2cm}}$

8. $9 + 25 + (30 - 15) \times 3 = \underline{\hspace{2cm}}$

9. $45 - 12 + 5 \times 6 \times 2 = \underline{\hspace{2cm}}$

10. $7 \times 8 - (22 + 16 - 10) = \underline{\hspace{2cm}}$

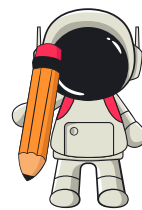
11. $5 \times (12 + 20 - 15 - 5) = \underline{\hspace{2cm}}$

12. $10 + 18 + (20 - 10) \times 4 = \underline{\hspace{2cm}}$

13. $30 - 9 + 7 \times 5 \times 1 = \underline{\hspace{2cm}}$

14. $8 \times 6 - (14 + 9 - 5) = \underline{\hspace{2cm}}$

15. $4 \times (11 + 18 - 14 - 8) = \underline{\hspace{2cm}}$



ADD/SUBTRACT/MULTIPLY W/ PARENTHESIS - 5 NUMBERS

Solve the following.

1. $15 + 24 + (25 - 10) \times 3 = \underline{\hspace{2cm}}$

2. $55 - 20 + 3 \times 8 \times 2 = \underline{\hspace{2cm}}$

3. $9 \times 5 - (18 + 14 - 7) = \underline{\hspace{2cm}}$

4. $7 \times (12 + 20 - 15 - 5) = \underline{\hspace{2cm}}$

5. $13 + 17 + (22 - 12) \times 2 = \underline{\hspace{2cm}}$

6. $40 - 11 + 6 \times 4 \times 3 = \underline{\hspace{2cm}}$

7. $5 \times 9 - (16 + 14 - 10) = \underline{\hspace{2cm}}$

8. $6 \times (13 + 25 - 20 - 8) = \underline{\hspace{2cm}}$

9. $11 + 22 + (28 - 15) \times 2 = \underline{\hspace{2cm}}$

10. $60 - 20 + 4 \times 7 \times 1 = \underline{\hspace{2cm}}$

11. $8 \times 7 - (24 + 18 - 12) = \underline{\hspace{2cm}}$

12. $5 \times (14 + 30 - 20 - 8) = \underline{\hspace{2cm}}$

13. $12 + 21 + (18 - 8) \times 3 = \underline{\hspace{2cm}}$

14. $70 - 25 + 3 \times 6 \times 2 = \underline{\hspace{2cm}}$

15. $9 \times 4 - (12 + 15 - 7) = \underline{\hspace{2cm}}$