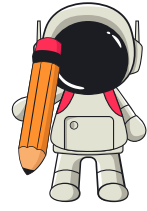


ADD / SUBTRACT WITH PARENTHESIS - 6 NUMBERS

Solve the following.

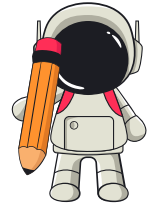
1. $11 - (30 - 28 + 5) + 14 - 6 = \underline{\hspace{2cm}}$
2. $20 + 13 + 24 - (28 - 8 - 14) = \underline{\hspace{2cm}}$
3. $35 - 10 - (34 - 21 - 2) + 31 = \underline{\hspace{2cm}}$
4. $(20 + 29 - 7) - (35 + 11 - 12) = \underline{\hspace{2cm}}$
5. $12 - (32 - 30 + 4) + 13 - 9 = \underline{\hspace{2cm}}$
6. $17 + 14 + 25 - (29 - 5 - 12) = \underline{\hspace{2cm}}$
7. $34 - 11 - (33 - 20 - 4) + 27 = \underline{\hspace{2cm}}$
8. $(25 + 27 - 6) - (38 + 9 - 14) = \underline{\hspace{2cm}}$
9. $15 - (31 - 29 + 3) + 10 - 8 = \underline{\hspace{2cm}}$
10. $13 + 12 + 26 - (30 - 7 - 13) = \underline{\hspace{2cm}}$
11. $32 - 12 - (36 - 23 - 5) + 33 = \underline{\hspace{2cm}}$
12. $(21 + 34 - 9) - (37 + 10 - 11) = \underline{\hspace{2cm}}$
13. $14 - (34 - 33 + 6) + 12 - 7 = \underline{\hspace{2cm}}$
14. $19 + 15 + 22 - (27 - 6 - 16) = \underline{\hspace{2cm}}$
15. $31 - 14 - (30 - 18 - 3) + 28 = \underline{\hspace{2cm}}$



ADD / SUBTRACT WITH PARENTHESIS - 6 NUMBERS

Solve the following.

1. $(24 + 32 - 8) - (36 + 8 - 12) = \underline{\hspace{2cm}}$
2. $13 - (33 - 31 + 7) + 11 - 9 = \underline{\hspace{2cm}}$
3. $15 + 10 + 24 - (28 - 5 - 14) = \underline{\hspace{2cm}}$
4. $29 - 13 - (35 - 22 - 4) + 30 = \underline{\hspace{2cm}}$
5. $(23 + 31 - 6) - (39 + 7 - 13) = \underline{\hspace{2cm}}$
6. $12 - (32 - 30 + 5) + 14 - 8 = \underline{\hspace{2cm}}$
7. $18 + 9 + 21 - (26 - 7 - 15) = \underline{\hspace{2cm}}$
8. $34 - 15 - (31 - 19 - 6) + 29 = \underline{\hspace{2cm}}$
9. $(22 + 29 - 7) - (38 + 9 - 10) = \underline{\hspace{2cm}}$
10. $14 - (31 - 30 + 8) + 13 - 7 = \underline{\hspace{2cm}}$
11. $20 + 11 + 23 - (25 - 4 - 17) = \underline{\hspace{2cm}}$
12. $33 - 12 - (30 - 21 - 5) + 31 = \underline{\hspace{2cm}}$
13. $(21 + 30 - 9) - (35 + 8 - 11) = \underline{\hspace{2cm}}$
14. $13 - (34 - 32 + 6) + 10 - 6 = \underline{\hspace{2cm}}$
15. $16 + 13 + 24 - (29 - 6 - 12) = \underline{\hspace{2cm}}$



ADD / SUBTRACT WITH PARENTHESIS - 6 NUMBERS

Solve the following.

1. $15 + 10 + 20 - (25 - 7 - 18) = \underline{\hspace{2cm}}$
2. $30 - 16 - (35 - 22 - 5) + 32 = \underline{\hspace{2cm}}$
3. $(21 + 30 - 9) - (36 + 8 - 10) = \underline{\hspace{2cm}}$
4. $13 - (32 - 30 + 6) + 12 - 8 = \underline{\hspace{2cm}}$
5. $18 + 12 + 23 - (24 - 5 - 17) = \underline{\hspace{2cm}}$
6. $33 - 12 - (30 - 20 - 6) + 28 = \underline{\hspace{2cm}}$
7. $(24 + 28 - 6) - (37 + 10 - 15) = \underline{\hspace{2cm}}$
8. $14 - (34 - 33 + 7) + 11 - 10 = \underline{\hspace{2cm}}$
9. $16 + 9 + 22 - (27 - 4 - 16) = \underline{\hspace{2cm}}$
10. $31 - 13 - (31 - 18 - 3) + 30 = \underline{\hspace{2cm}}$
11. $(22 + 31 - 5) - (34 + 9 - 11) = \underline{\hspace{2cm}}$
12. $10 - (35 - 34 + 9) + 9 - 7 = \underline{\hspace{2cm}}$
13. $14 + 11 + 21 - (26 - 6 - 15) = \underline{\hspace{2cm}}$
14. $28 - 15 - (32 - 19 - 7) + 29 = \underline{\hspace{2cm}}$
15. $(23 + 33 - 8) - (39 + 7 - 13) = \underline{\hspace{2cm}}$