

Grade 3 Addition Worksheet

ADDING A 2-DIGIT NUMBER AND A 1-DIGIT NUMBER (WITH CARRYING)

Find the sum.

$1. 8 + \underline{\quad} = 31$

$16. 21 + \underline{\quad} = 29$

$2. 71 + 9 =$

$17. 48 + 7 =$

$3. 54 + \underline{\quad} = 61$

$18. 30 + \underline{\quad} = 37$

$4. 38 + 4 =$

$19. 52 + 9 =$

$5. 23 + \underline{\quad} = 31$

$20. 8 + \underline{\quad} = 45$

$6. 45 + 6 =$

$21. 61 + 10 =$

$7. 29 + \underline{\quad} = 37$

$22. 40 + \underline{\quad} = 47$

$8. 56 + 9 =$

$23. 77 + 5 =$

$9. 7 + \underline{\quad} = 41$

$24. 34 + \underline{\quad} = 41$

$10. 67 + 8 =$

$25. 69 + 12 =$

$11. 32 + \underline{\quad} = 40$

$26. 7 + \underline{\quad} = 36$

$12. 49 + 10 =$

$27. 53 + 8 =$

$13. 28 + \underline{\quad} = 36$

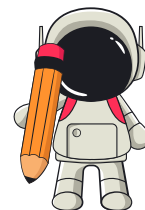
$28. 22 + \underline{\quad} = 29$

$14. 73 + 11 =$

$29. 75 + 9 =$

$15. 5 + \underline{\quad} = 30$

$30. 6 + \underline{\quad} = 31$



Grade 3 Addition Worksheet

ADDING A 2-DIGIT NUMBER AND A 1-DIGIT NUMBER, MISSING ADDEND

Find the sum.

1. $27 + \underline{\quad} = 35$

16. $\underline{\quad} + 7 = 48$

2. $51 + 9 =$

17. $74 + 9 =$

3. $10 + \underline{\quad} = 50$

18. $20 + \underline{\quad} = 28$

4. $84 + 11 =$

19. $42 + 8 =$

5. $26 + \underline{\quad} = 33$

20. $\underline{\quad} + 10 = 54$

6. $43 + 7 =$

21. $85 + 11 =$

7. $37 + \underline{\quad} = 45$

22. $33 + \underline{\quad} = 40$

8. $59 + 6 =$

23. $66 + 9 =$

9. $9 + \underline{\quad} = 41$

24. $7 + \underline{\quad} = 52$

10. $76 + 8 =$

25. $79 + 8 =$

11. $31 + \underline{\quad} = 38$

26. $25 + \underline{\quad} = 33$

12. $62 + 7 =$

27. $49 + 7 =$

13. $\underline{\quad} + 12 = 49$

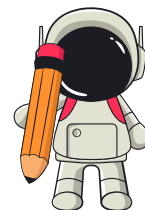
28. $\underline{\quad} + 6 = 31$

14. $81 + 9 =$

29. $60 + 5 =$

15. $24 + \underline{\quad} = 32$

30. $29 + \underline{\quad} = 36$



Grade 3 Addition Worksheet

ADDING A 2-DIGIT NUMBER AND A 1-DIGIT NUMBER, MISSING ADDEND

Find the sum.

1. $27 + \underline{\quad} = 35$ 16. $29 + \underline{\quad} = 42$

2. $51 + 9 =$ 17. $54 + 8 =$

3. $10 + \underline{\quad} = 50$ 18. $13 + \underline{\quad} = 29$

4. $84 + 11 =$ 19. $68 + 12 =$

5. $26 + \underline{\quad} = 33$ 20. $47 + \underline{\quad} = 59$

6. $43 + 7 =$ 21. $72 + 11 =$

7. $37 + \underline{\quad} = 45$ 22. $\underline{\quad} + 17 = 53$

8. $59 + 6 =$ 23. $63 + 14 =$

9. $9 + \underline{\quad} = 41$ 24. $15 + \underline{\quad} = 35$

10. $76 + 8 =$ 25. $92 + 6 =$

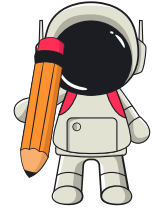
11. $31 + \underline{\quad} = 38$ 26. $\underline{\quad} + 8 = 49$

12. $62 + 7 =$ 27. $34 + 16 =$

13. $\underline{\quad} + 12 = 49$ 28. $56 + \underline{\quad} = 74$

14. $81 + 9 =$ 29. $\underline{\quad} + 23 = 58$

15. $24 + \underline{\quad} = 32$ 30. $48 + 7 =$



ADDING A 2-DIGIT NUMBER AND A 1-DIGIT NUMBER, MISSING ADDEND

Find the sum.

1. $20 + \underline{\quad} = 50$

2. $79 + 9 =$

3. $\underline{\quad} + 15 = 48$

4. $38 + 12 =$

5. $43 + \underline{\quad} = 63$

6. $\underline{\quad} + 10 = 62$

7. $66 + 14 =$

8. $22 + \underline{\quad} = 40$

9. $55 + 8 =$

10. $81 + \underline{\quad} = 93$

11. $45 + \underline{\quad} = 61$

12. $30 + 19 =$

13. $62 + \underline{\quad} = 89$

14. $19 + 21 =$

15. $78 + \underline{\quad} = 100$

16. $\underline{\quad} + 7 = 58$

17. $71 + 11 =$

18. $36 + \underline{\quad} = 52$

19. $83 + 14 =$

20. $\underline{\quad} + 22 = 67$

21. $58 + \underline{\quad} = 79$

22. $\underline{\quad} + 18 = 73$

23. $64 + 13 =$

24. $28 + \underline{\quad} = 50$

25. $76 + 17 =$

26. $\underline{\quad} + 11 = 45$

27. $39 + 16 =$

28. $57 + \underline{\quad} = 84$

29. $\underline{\quad} + 9 = 62$

30. $49 + 8 =$