

## MULTIPLYING 2

### BY WHOLE TENS – MISSING FACTOR

Fill in the missing number.

•  $2 \times \underline{\quad} = 60$

•  $2 \times 10 = \underline{\quad}$

•  $\underline{\quad} \times 40 = 40$

•  $\underline{\quad} \times 50 = 100$

•  $2 \times 80 = \underline{\quad}$

•  $2 \times \underline{\quad} = 80$

•  $2 \times 90 = \underline{\quad}$

•  $\underline{\quad} \times 70 = 10$

•  $2 \times 60 = \underline{\quad}$

•  $2 \times \underline{\quad} = 160$

•  $2 \times \underline{\quad} = 40$

•  $\underline{\quad} \times 5 = 50$

•  $2 \times \underline{\quad} = 60$

•  $2 \times 60 = \underline{\quad}$

•  $2 \times \underline{\quad} = 40$

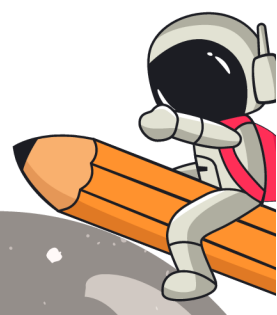
•  $\underline{\quad} \times 50 = 100$

•  $2 \times 20 = \underline{\quad}$

•  $2 \times \underline{\quad} = 140$

•  $5 \times 50 = \underline{\quad}$

•  $2 \times \underline{\quad} = 120$



Grade 2 Addition Worksheet

## MULTIPLYING 2

### BY WHOLE TENS – MISSING FACTOR

Fill in the missing number.

•  $2 \times \underline{\quad} = 100$

•  $2 \times 50 = \underline{\quad}$

•  $\underline{\quad} \times 70 = 140$

•  $\underline{\quad} \times 80 = 160$

•  $2 \times 90 = \underline{\quad}$

•  $2 \times \underline{\quad} = 40$

•  $2 \times 40 = \underline{\quad}$

•  $\underline{\quad} \times 70 = 10$

•  $2 \times \underline{\quad} = 140$

•  $2 \times 30 = \underline{\quad}$

•  $2 \times \underline{\quad} = 40$

•  $\underline{\quad} \times 50 = 100$

•  $2 \times \underline{\quad} = 60$

•  $2 \times 60 = \underline{\quad}$

•  $2 \times \underline{\quad} = 80$

•  $\underline{\quad} \times 70 = 140$

•  $2 \times 90 = \underline{\quad}$

•  $2 \times \underline{\quad} = 180$

•  $2 \times 40 = \underline{\quad}$

•  $2 \times \underline{\quad} = 160$

