

MULTIPLICATION

TABLES OF 5 - MISSING FACTOR

Fill in the missing number.

• $4 \times \underline{\quad} = 20$

• $5 \times 5 = \underline{\quad}$

• $\underline{\quad} \times 5 = 40$

• $\underline{\quad} \times 5 = 25$

• $7 \times 5 = \underline{\quad}$

• $9 \times \underline{\quad} = 45$

• $3 \times 5 = \underline{\quad}$

• $\underline{\quad} \times 5 = 15$

• $4 \times \underline{\quad} = 20$

• $4 \times \underline{\quad} = 20$

• $2 \times \underline{\quad} = 10$

• $\underline{\quad} \times 5 = 5$

• $6 \times \underline{\quad} = 30$

• $3 \times 5 = \underline{\quad}$

• $8 \times \underline{\quad} = 40$

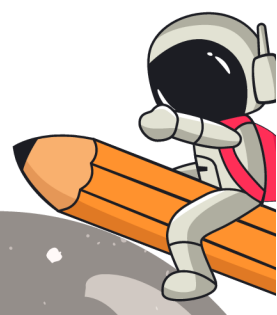
• $\underline{\quad} \times 5 = 35$

• $3 \times 5 = \underline{\quad}$

• $4 \times \underline{\quad} = 20$

• $4 \times \underline{\quad} = 20$

• $4 \times \underline{\quad} = 20$



MULTIPLICATION

TABLES OF 5 - MISSING FACTOR

Fill in the missing number.

• $4 \times 5 = \underline{\quad}$

• $5 \times \underline{\quad} = 25$

• $3 \times 5 = \underline{\quad}$

• $\underline{\quad} \times 5 = 35$

• $3 \times \underline{\quad} = 40$

• $9 \times 5 = \underline{\quad}$

• $4 \times \underline{\quad} = 20$

• $7 \times 5 = \underline{\quad}$

• $4 \times \underline{\quad} = 20$

• $8 \times 5 = \underline{\quad}$

• $5 \times \underline{\quad} = 25$

• $\underline{\quad} \times 5 = 5$

• $3 \times \underline{\quad} = 15$

• $6 \times 5 = \underline{\quad}$

• $7 \times \underline{\quad} = 35$

• $\underline{\quad} \times 5 = 18$

• $8 \times 5 = \underline{\quad}$

• $6 \times \underline{\quad} = 12$

• $8 \times 5 = \underline{\quad}$

• $4 \times \underline{\quad} = 20$

