

Grade 2 Addition Worksheet

TWO TIMES TABLES (MISSING FACTORS)

Fill in the missing number.

• $4 \times \underline{\quad} = 8$

• $5 \times 2 = \underline{\quad}$

• $\underline{\quad} \times 2 = 4$

• $\underline{\quad} \times 2 = 2$

• $2 \times 4 = \underline{\quad}$

• $9 \times \underline{\quad} = 18$

• $4 \times 2 = \underline{\quad}$

• $\underline{\quad} \times 6 = 16$

• $8 \times \underline{\quad} = 24$

• $\underline{\quad} \times 8 = 56$

• $4 \times \underline{\quad} = 8$

• $\underline{\quad} \times 2 = 14$

• $3 \times \underline{\quad} = 6$

• $3 \times 2 = \underline{\quad}$

• $2 \times \underline{\quad} = 20$

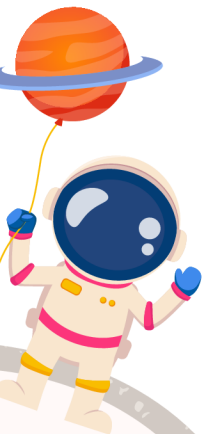
• $\underline{\quad} \times 2 = 18$

• $8 \times 2 = \underline{\quad}$

• $6 \times \underline{\quad} = 12$

• $\underline{\quad} \times 3 = 15$

• $2 \times \underline{\quad} = 10$



Grade 2 Addition Worksheet

**TWO TIMES TABLES
(MISSING FACTORS)**

Fill in the missing number.

• $4 \times 2 = \underline{\quad}$

• $5 \times \underline{\quad} = 10$

• $4 \times 2 = \underline{\quad}$

• $\underline{\quad} \times 2 = 2$

• $3 \times \underline{\quad} = 6$

• $9 \times 2 = \underline{\quad}$

• $4 \times \underline{\quad} = 8$

• $7 \times 2 = \underline{\quad}$

• $9 \times 2 = \underline{\quad}$

• $2 \times 2 = \underline{\quad}$

• $4 \times \underline{\quad} = 8$

• $\underline{\quad} \times 2 = 14$

• $3 \times \underline{\quad} = 6$

• $3 \times 2 = \underline{\quad}$

• $2 \times \underline{\quad} = 8$

• $\underline{\quad} \times 2 = 18$

• $8 \times 2 = \underline{\quad}$

• $6 \times \underline{\quad} = 12$

• $4 \times 2 = \underline{\quad}$

• $\underline{\quad} \times 2 = \underline{\quad}$

