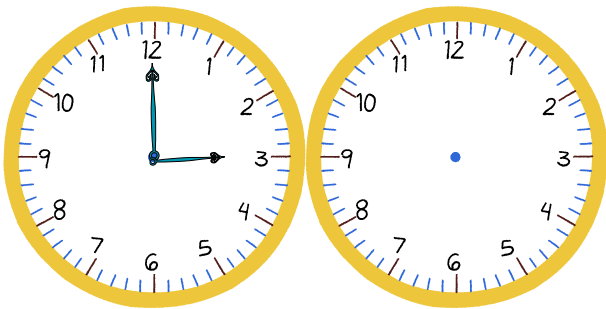


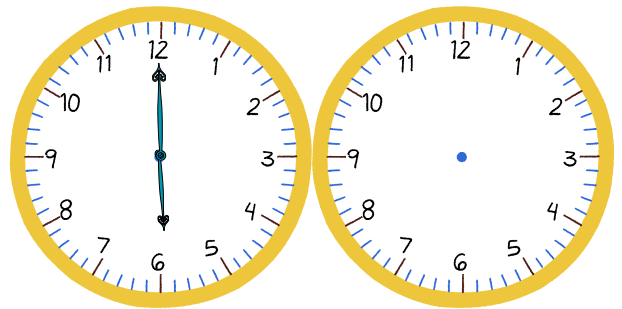
Grade 2 Time Worksheet

Elapsed time - forwards and backwards (half hours)

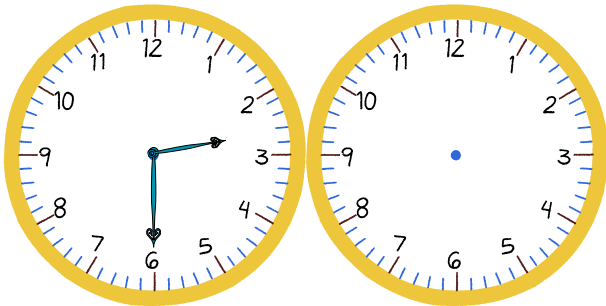
Draw the clock hands to show the time it was or will be.



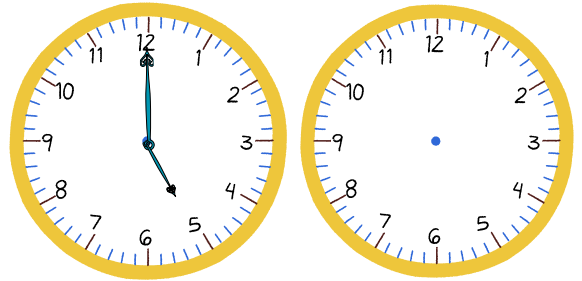
What time was it 1 hour ago?



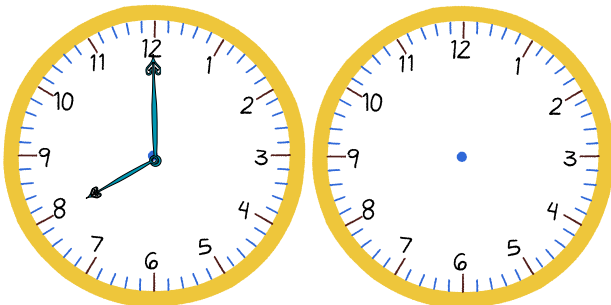
What time was it 4 hours 30 minutes ago?



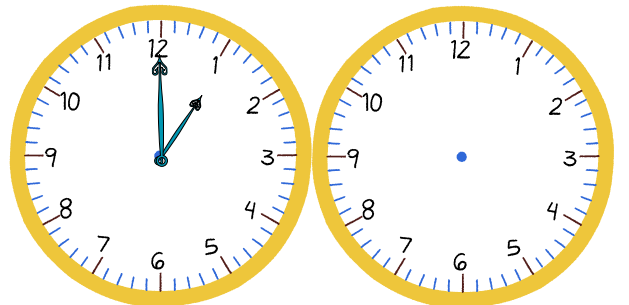
What time will it be in 3 hours?



What time will it be in 5 hours 30 minutes?



What time was it 4 hours ago?

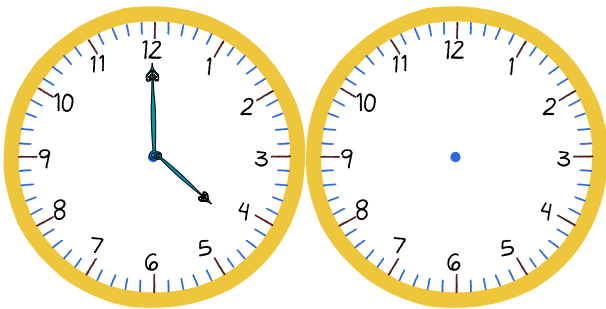


What time will it be in 2 hours 30 minutes?

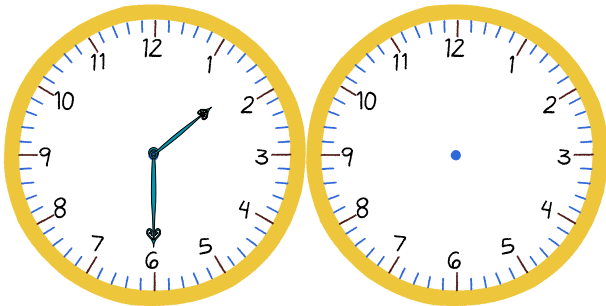
Grade 2 Time Worksheet

Elapsed time - forwards and backwards (half hours)

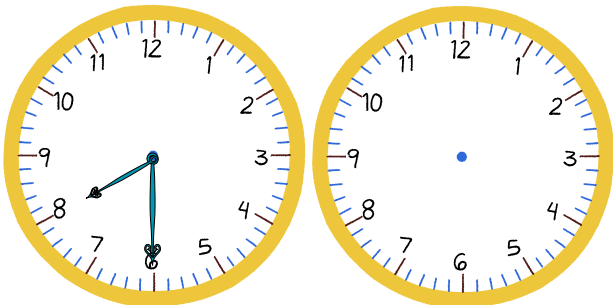
Draw the clock hands to show the time it was or will be.



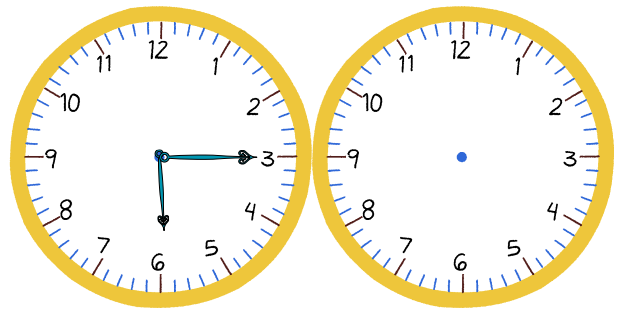
What time was it 2 hours 30 minutes ago?



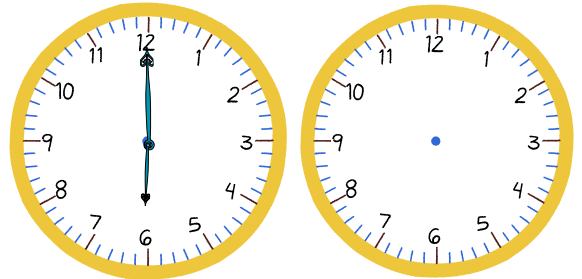
What time will it be in 5 hours 30 minutes?



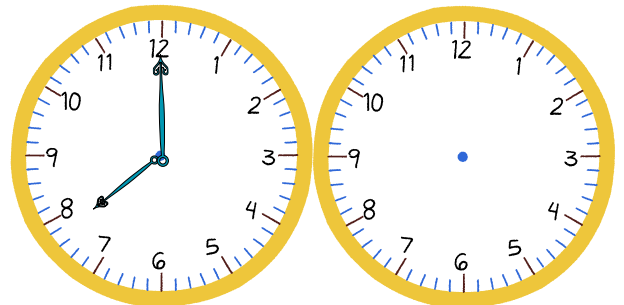
What time will it be in 4 hours 30 minutes?



What time was it 4 hours 30 minutes ago?



What time was it 2 hours 30 minutes ago?

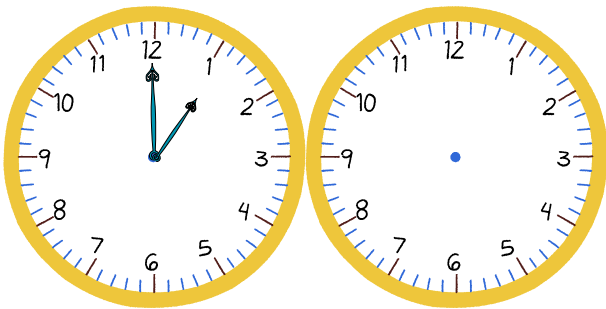


What time will it be in 2 hours 30 minutes?

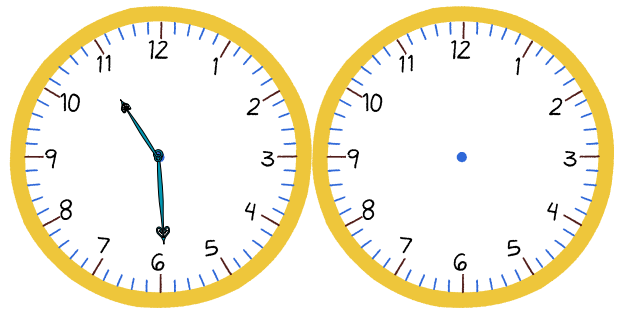
Grade 2 Time Worksheet

Elapsed time - forwards and backwards (half hours)

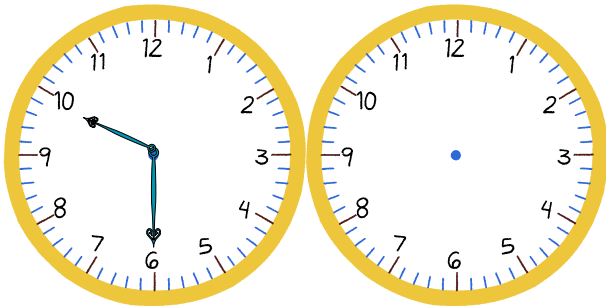
Draw the clock hands to show the time it was or will be.



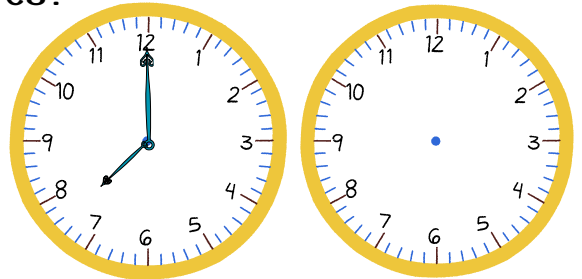
What time was it 1 hour 30 minutes ago?



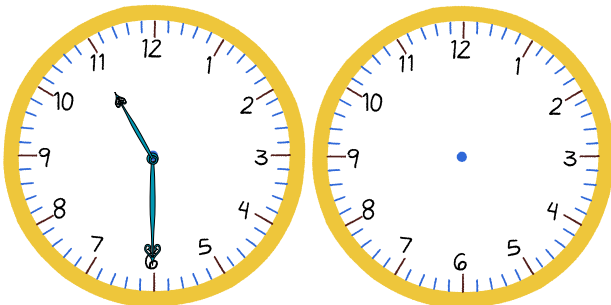
What time will it be in 4 hours 30 minutes?



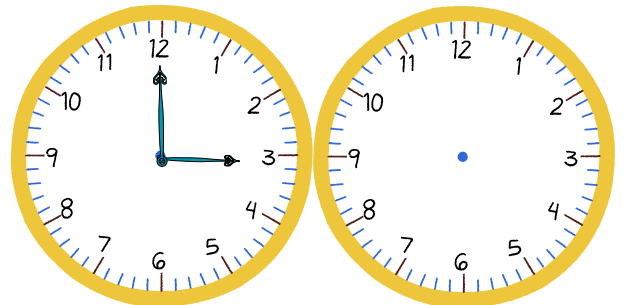
What time was it 4 hours ago?



What time was it 2 hours 30 minutes ago?



What time was it 2 hours 30 minutes ago?



What time was it 2 hours ago?